

OREGON CORNER RESTORATION FORM

SECTION 28,27,34,33 TOWNSHIP 4 NORTH RANGE 29 EAST V-13
 COUNTY : UMATILLA DATE 11/01

CORNER DESIGNATION

SECTION CORNER

- CONDITION REPORT ONLY
- NOT FOUND
- RENEWED
- UNCOVERED
- SURVEYED IN
- REFERENCED

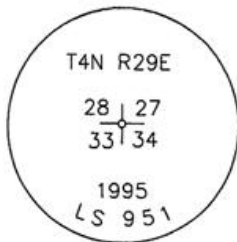
PREVIOUS RENEWALS / SURVEYS, ETC.

ORIGINALLY SURVEYED IN 1861 BY DAVENPORT UNDER CONTRACT #101. HE SET A POST IN A MOUND OF EARTH AND A CHARRED STAKE.
 IN 1995 EDWARDS SET A 1" x 30" IRON PIPE WITH A 2 3/8" BRASS CAP.

MONUMENTS AND ACCESSORIES FOUND: CONDITION AND SOURCE

AN ALUMINUM TAG #951 ON A 36" COTTONWOOD TREE LIES N 57°52'08" W, 48.83 FEET.
 A 2 1/2 BRASS CAP MARKED AS BELOW LIES S 39°36'26" W, 31.89 FEET.

MONUMENT DETAIL

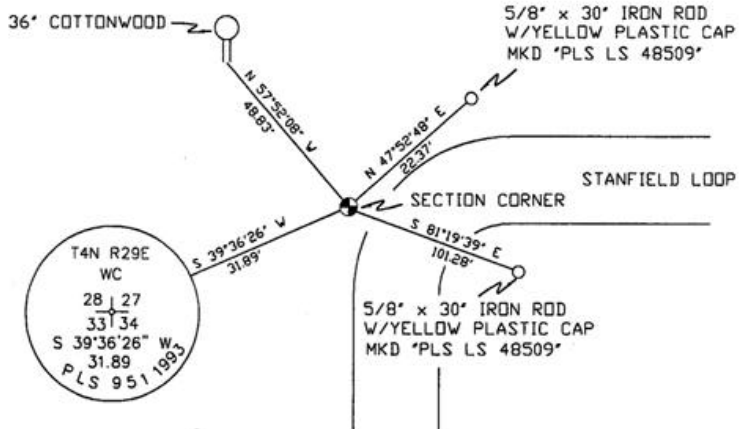


NAD 83/91
 OREGON STATE PLANE
 INTERNATIONAL FEET

777459.9456
 8537656.0149



SKETCH



MONUMENT SET (PROCEDURES AND DESCRIPTION)

NEW ACCESSORIES FROM WHICH

A 5/8" x 30" IRON ROD WITH A YELLOW PLASTIC CAP MKD "PLS LS 48509" LIES S 81°19'39" E, 101.28 FEET.
 A 5/8" x 30" IRON ROD WITH A YELLOW PLASTIC CAP MKD "PLS LS 48509" LIES N 47°52'48" E, 22.37 FEET.

LOCATION AND COMMENTS

FROM INTERSECTION OF FEEDVILLE ROAD WITH EDWARDS ROAD GO SOUTH 1 MILE AND EAST 1 MILE TO CORNER.

COMPASS DEC.

FIRM/AGENCY
 PRIMM LAND SURVEYING
 P.O. BOX 1322
 HERMISTON, OREGON 97838

PARTY CHIEF
 KEITH P. PRIMM

NOTES

WITNESS
 BRIT L. PRIMM

SURVEYOR'S SEAL

REGISTERED
 PROFESSIONAL
 LAND SURVEYOR

BAIRZ
 OREGON
 JULY 13, 1999
 BRIT L. PRIMM
 48509

RECEIVED BY

Umatilla County

Date 12-01

Rec'd By KK

01-213-A

EXPIRATION DATE:12/31/02