

# OREGON CORNER RESTORATION FORM

SECTION 30.29 TOWNSHIP 4 NORTH RANGE 29 EAST  
 COUNTY : UMATILLA DATE 01/02

T-5

CORNER DESIGNATION

1/4 CORNER

X CONDITION REPORT ONLY

- NOT FOUND
- RENEWED
- UNCOVERED
- SURVEYED IN
- REFERENCED

PREVIOUS RENEWALS / SURVEYS, ETC.

ORIGINALLY SURVEYED IN 1861 BY DAVENPORT UNDER CONTRACT #101. HE SET A POST IN A MOUND OF EARTH AND A CHARRED STAKE.  
 IN 1980 KRUMBEIN SET A BRASS CAP IN PLACE OF "WAGON AXLE".

MONUMENTS AND ACCESSORIES FOUND: CONDITION AND SOURCE

AN ALUMINUM TAG #951 ON A R X R TIE FENCE COR. LIES N 45°31'04" E, 40.51 FEET.  
 METAL TELE. WARNING SIGN POST LIES S 60°24'21" E, 32.77 FEET.  
 1' X 30" IRON PIPE WITH 2 3/8" BRASS CAP LIES N 44°08'16" W, 18.69 FEET.  
 1' X 30" IRON PIPE WITH 2 3/8" BRASS CAP LIES S 47°19'00" W, 16.31 FEET.

MONUMENT DETAIL

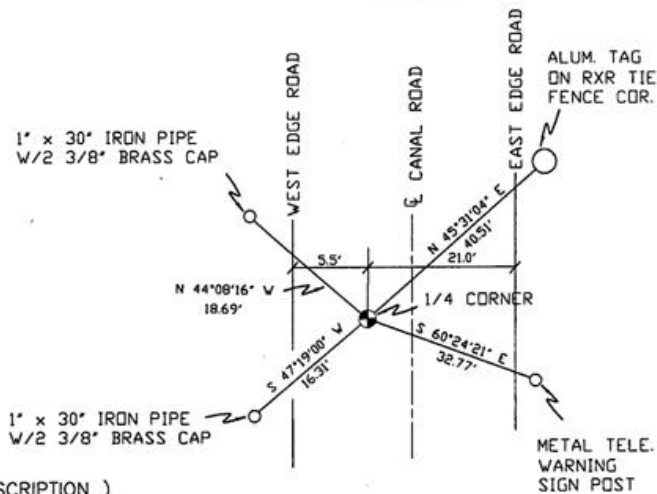
SKETCH

T4N R29E  
1/4  
30 29  
1980  
PLS 933

NAD 83/91  
OREGON STATE PLANE  
INTERNATIONAL FEET

779816.1441  
8527093.0074

N.T.S.



MONUMENT SET ( PROCEDURES AND DESCRIPTION )

NEW ACCESSORIES FROM WHICH

LOCATION AND COMMENTS

FROM INTERSECTION OF FEEDVILLE ROAD AND CANAL ROAD, GO SOUTH ON CANAL ROAD 1/2 MILE TO COR.

COMPASS DEC.

FIRM/AGENCY  
 PRIMM LAND SURVEYING  
 P.O. BOX 1322  
 HERMISTON, OREGON 97838

PARTY CHIEF  
 KEITH P. PRIMM

NOTES

WITNESS  
 BRIT L. PRIMM

RECEIVED BY

Umatilla County Surveyor

Date 2-02

Rec'd By KK

No. 02-49-9

SURVEYOR'S SEAL

REGISTERED  
 PROFESSIONAL  
 LAND SURVEYOR

OREGON  
 JULY 13, 1999  
 BRIT L. PRIMM  
 48509

EXPIRATION DATE: 12/31/02