

OREGON CORNER RESTORATION FORM

SECTION 30 TOWNSHIP 4 NORTH RANGE 29 EAST R-3

COUNTY : UMATILLA DATE 01-2002

CORNER DESIGNATION

NORTH 1/4 CORNER

CONDITION REPORT ONLY
 NOT FOUND
 RENEWED
 UNCOVERED
 SURVEYED IN
 REFERENCED

PREVIOUS RENEWALS / SURVEYS, ETC.

ORIGINALLY SURVEYED BY DAVENPORT IN 1861 #101. HE SET A POST IN A MOUND WITH A CHARRED STAKE.

IN 1980 KRUMBEIN SET A 2 1/2" BRASS CAP AT LOC. "WAGON AXLE" (SINGLE PROPORTION?)
SEE MY 1994-1 COUNTY PUBLIC MONUMENTATION SURVEY

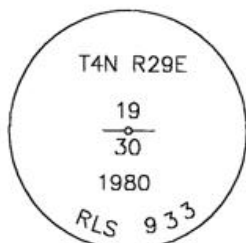
MONUMENTS AND ACCESSORIES FOUND: CONDITION AND SOURCE

FOUND 2 1/2" BRASS CAP STAMPED AS BELOW FROM WHICH:

A 1" X 30" IRON PIPE WITH 2 3/8" B.C. W.C. BEARS S 0°15'10" E 29.96 FEET

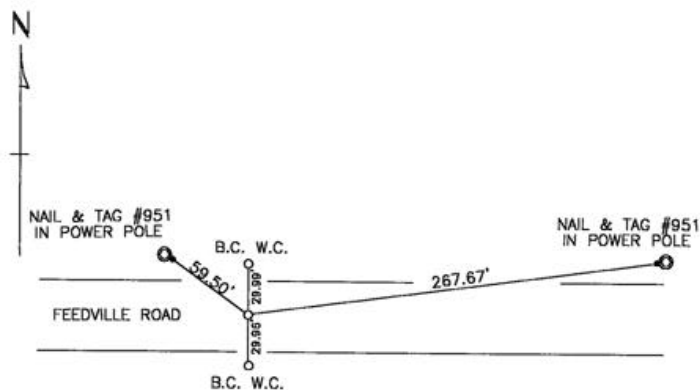
A 1" X 30" IRON PIPE WITH 2 3/8" B.C. W.C. BEARS N 0°12'46" W 29.99 FEET

MONUMENT DETAIL



NAD 83/91
OREGON STATE PLANE
INTERNATIONAL FEET
782413.8813
8524412.0787

SKETCH



MONUMENT SET (PROCEDURES AND DESCRIPTION)

NA

NEW ACCESSORIES FROM WHICH

AN ALUMINUM TAG #951 IN A POWER POLE BEARS N 54°17'06" W 59.50 FEET

AN ALUMINUM TAG #951 IN A POWER POLE BEARS N 82°25'48" E 267.67 FEET

LOCATION AND COMMENTS

FROM INTERSECTION OF U.S. HWY #395 WITH FEEDVILLE ROAD. GO EAST ON FEEDVILLE 0.2' MILE TO CORNER.

COMPASS DEC.

FIRM/AGENCY
EDWARDS SURVEYING
P.O. BOX 763
HERMISTON, OREGON 97838

PARTY CHIEF
CURTIS FAVOREL

NOTES

WITNESS
WALT MUNDELL

SURVEYOR'S SEAL

REGISTERED
PROFESSIONAL
LAND SURVEYOR

G. Dennis Edwards

OREGON
JULY 16, 1971
G. DENNIS EDWARDS
9 5 1

RECEIVED BY RENEWS 12/31/2003

Umatilla County Su.

Date 2-02

Rec'd By KR

No. 02-48-g