

# OREGON CORNER RESTORATION FORM

SECTION 25      TOWNSHIP 4 NORTH    RANGE 29 EAST      R-23  
 COUNTY : UMATILLA      DATE 11-2001

CORNER DESIGNATION

NORTH 1/4

- CONDITION REPORT ONLY
- NOT FOUND
- RENEWED
- UNCOVERED
- SURVEYED IN
- REFERENCED

PREVIOUS RENEWALS / SURVEYS, ETC.

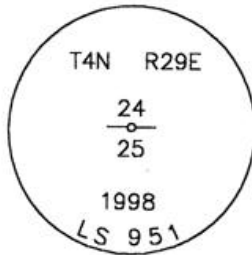
ORIGINALLY SURVEYED IN 1861 BY DAVENPORT UNDER CONTRACT #101. HE SET A POST IN A MOUND OF EARTH AND A CHARRED STAKE.  
 IN 1998 EDWARDS SET A 1"X30" IRON PIPE WITH A 2 3/8" BRASS CAP BY SINGLE PROPORTION.

MONUMENTS AND ACCESSORIES FOUND: CONDITION AND SOURCE

FOUND A 2 3/8" BRASS CAP ON A 1" IRON PIPE STAMPED AS BELOW.  
 FROM WHICH:

- AN ALUMINUM TAG #951 IN A POWER POLE BEARS N 89°59'59" W 258.50 FEET.
- AN ALUMINUM TAG #951 IN A POWER POLE BEARS S 80°36'32" E 10.75 FEET.
- AN ALUMINUM TAG #951 IN A POWER POLE BEARS S 41°26'57" W 81.27 FEET.
- A 5/8" IRON REBAR WITH PLASTIC CAP #951 BEARS S 0°09'45" W 61.62 FEET.

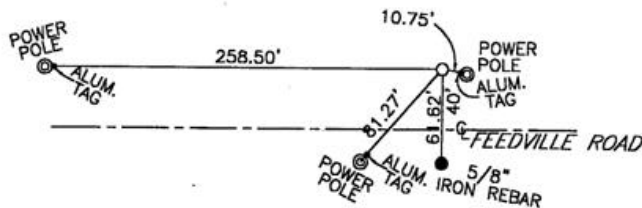
MONUMENT DETAIL



NAD 83/91  
 OREGON STATE PLANE  
 INTERNATIONAL FEET  
 783036.0791  
 8550823.3995

MONUMENT SET ( PROCEDURES AND DESCRIPTION )

SKETCH



NEW ACCESSORIES FROM WHICH

LOCATION AND COMMENTS  
 40 FEET NORTH OF FEEDVILLE  
 ROAD, 1 MILE EAST OF LOOP  
 ROAD.

COMPASS DEC.

FIRM/AGENCY  
 EDWARDS SURVEYING  
 P.O. BOX 763  
 HERMISTON, OREGON 97838

PARTY CHIEF  
 D. EDWARDS

NOTES

WITNESS  
 CURTIS J FAVOREL

RECEIVED BY

Umatilla County Surveyor

Date 12-01

Rec'd By KK

No. 01-213-9

SURVEYOR'S SEAL

REGISTERED  
 PROFESSIONAL  
 LAND SURVEYOR

*G. Dennis Edwards*

OREGON  
 JULY 16, 1971  
 G. DENNIS EDWARDS  
 9 5 1

RENEWS 12/31/2001