

OREGON CORNER RESTORATION FORM

SECTION 23 TOWNSHIP 4 NORTH RANGE 29 EAST R-17
 COUNTY : UMATILLA DATE 11-2001

CORNER DESIGNATION

SW CORNER

- CONDITION REPORT ONLY
- NOT FOUND
- RENEWED
- UNCOVERED
- SURVEYED IN
- REFERENCED

PREVIOUS RENEWALS / SURVEYS, ETC.

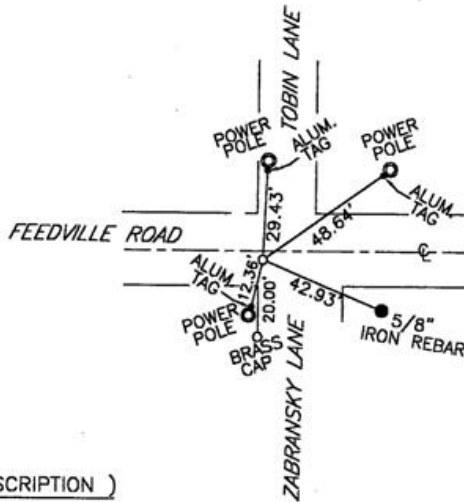
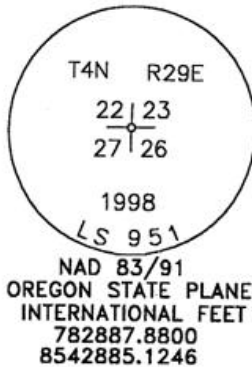
ORIGINALLY SURVEYED IN 1860 BY DAVENPORT UNDER CONTRACT #101. HE SET A POST IN A MOUND OF EARTH AND A CHARRED STAKE.
 IN 1998 EDWARDS SET A 5/8"X30" IRON REBAR WITH 2" ALUMINUM CAP 20.00 FEET NORTH OF A 2 1/2" B.C. W.C.

MONUMENTS AND ACCESSORIES FOUND: CONDITION AND SOURCE

FOUND A 2" ALUMINUM CAP STAMPED AS BELOW FLUSH WITH THE PAVEMENT.
 FROM WHICH:
 AN ALUMINUM TAG #951 IN A POWER POLE BEARS S 13°24'02" W 12.36 FEET.
 AN ALUMINUM TAG #951 ON A BRACE POST BEARS N 55°12'32" E 48.64 FEET.
 AN ALUMINUM TAG #951 ON A POWER POLE BEARS N 2°20'40" E 29.43 FEET.
 A 2 1/2" BRASS CAP WITNESS CORNER (UNREADABLE) BEARS S 0°14'51" W 20.00 FEET.

SKETCH

MONUMENT DETAIL



MONUMENT SET (PROCEDURES AND DESCRIPTION)

NEW ACCESSORIES FROM WHICH

A 5/8"X30" IRON REBAR WITH PLASTIC CAP #48509 LIES S 67°37'52" E 42.93 FEET

RECEIVED BY

Umatilla County Surveyor

Date 12-01

Rec'd By KE

No. 01-213-9

SURVEYOR'S SEAL

LOCATION AND COMMENTS
 AT THE INTERSECTION OF
 FEEDVILLE ROAD AND ZABRANSKY
 LANE.

COMPASS DEC.

FIRM/AGENCY
 EDWARDS SURVEYING
 P.O. BOX 763
 HERMISTON, OREGON 97838

PARTY CHIEF
 CURTIS FAVOREL
NOTES

WITNESS
 WALT MUNDELL

REGISTERED
 PROFESSIONAL
 LAND SURVEYOR

G. Dennis Edwards

OREGON
 JULY 16, 1971
 G. DENNIS EDWARDS
 9 5 1
 RENEWS 12/31/2001