

OREGON CORNER RESTORATION FORM

SECTION 20 TOWNSHIP 4 NORTH RANGE 28 EAST N-7
12/99

CORNER DESIGNATION
N 1/4 CORNER

- CONDITION REPORT ONLY
- NOT FOUND
- RENEWED
- UNCOVERED
- SURVEYED IN
- REFERENCED

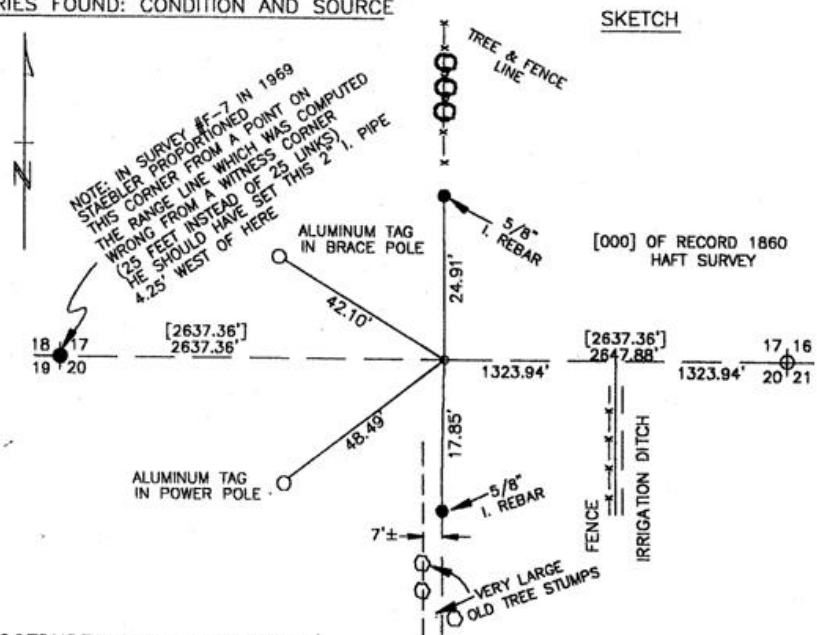
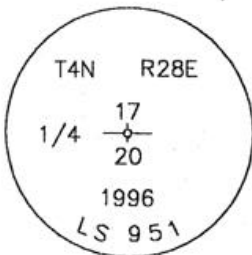
PREVIOUS RENEWALS / SURVEYS, ETC.

ORIGINALLY SURVEYED 1860 BY HAFT CONTRACT #93

MONUMENTS AND ACCESSORIES FOUND: CONDITION AND SOURCE

NOTHING

MONUMENT DETAIL



MONUMENT SET (PROCEDURES AND DESCRIPTION)

ON A STRAIGHT LINE BETWEEN THE NW CORNER & NE CORNER OF SEC. 20, AND TAKING INTO CONSIDERATION FENCE CORNERS AT THE E 1/16 AND HERE, I SET A 1"X30" IRON PIPE WITH 2 3/8" BRASS CAP STAMPED AS ABOVE. (SEE MY 1997 SURVEY FOR NAPOLITANO)

NEW ACCESSORIES FROM WHICH

A 5/8"X30" IRON REBAR LIES NORTH 29.91 FEET.
A 5/8"X30" IRON REBAR LIES SOUTH 17.85 FEET.
AN ALUMINUM TAG IN BRACE POLE LIES N 61°13' W 42.10 FEET.
AN ALUMINUM TAG IN POWER POLE LIES S 47°23' W 48.49 FEET.

LOCATION AND COMMENTS

CENTERLINE OF MINNEHAHA RD
1/2 MILE WEST OF ITS INTERSECTION
WITH KELLER RD.

COMPASS DEC.

FIRM/AGENCY
EDWARDS SURVEYING
P.O. BOX 763
HERMISTON, OREGON 97838
97838

PARTY CHIEF
G. DENNIS EDWARDS

NOTES

WITNESS
CURTIS J FAVOREL

SURVEYOR'S SEAL

REGISTERED
PROFESSIONAL
LAND SURVEYOR

G. Dennis Edwards

OREGON
JULY 16, 1971
G. DENNIS EDWARDS
951

RENEWS 12/31/99

RECEIVED BY

Umatilla County Surveyor
Date 4-2000
Rec'd by JK
No. 00-074-R