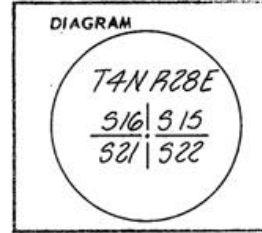


CERTIFIED RECORD OF LAND CORNER MONUMENTATION

N-13

History of original corner establishment:

- 1980: Krumbein found a RR spike in a monument box and set Brass Cap
- 1978: Edwards found RR spike in monument box
- 1963: Harris found RR spike



Description of corner evidence found:

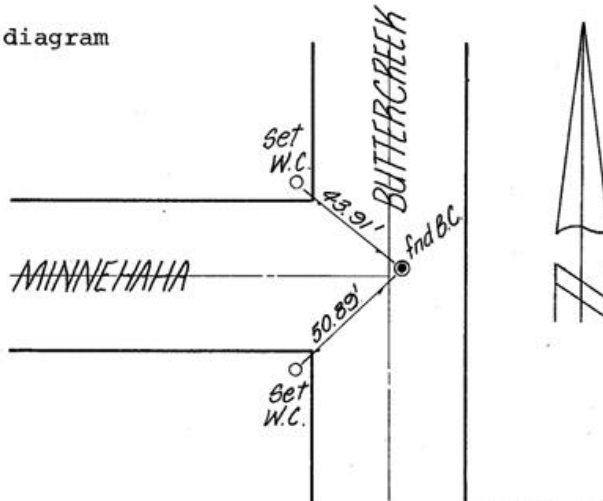
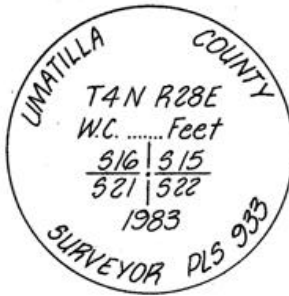
Found Brass Cap 2 1/2" Dia. 6" below surface in monument box.



Description of monument and accessories established to perpetuate the original location of this corner

Set two Witness Caps as per diagram

W.C.'s Stamped



REGISTERED PROFESSIONAL LAND SURVEYOR

Office of County Surveyor County of Umatilla
 State of Oregon, I hereby certify that the within instrument was filed in this office
 for record on the 25 day of March, 83.
David H. Krumbein by Betty S. Cochran
 (COUNTY OFFICIAL) (DEPUTY)

OREGON JULY 17, 1970 DAVID H. KRUMBEIN 933

02-74-M