

OREGON CORNER RESTORATION FORM

Section 7 Township 4N Range 29E

E-1

County UMATILLA Date 3/95

CORNER DESIGNATION

NW Cor

- Condition Report Only
- Not Found
- Renewed
- Unrecorded
- Surveyed In
- Referenced Out

Previous Renewals/Surveys, etc. ORIG SUR CAMPBELL 1860 Cont #95
he set Post in Mound. In 1980 Sur. Krumbein (S-156)
set 2 1/2" B.C. over 2" I. Pipe

Monument(s) & Accessories Found: (Condition and Source)

End Krumbein's 2 1/2" B.C. stamped as below

Monument Detail

Sketch



Monument Set (Procedures and Description)

New Accessories

Alum tag #951 in RR tie F. Post Bears N 45° 22' 10" W 43.51 Ft.
Alum tag #951 in P. Pole Bears S 84° 29' W 384.60 Ft
Alum tag #951 in P. Pole Bears S 41° 10' 30" W 53.39 Ft
1" X 30" I. Pipe with 2 3/8" B.C. Bears N 89° 29' 54" E 33.00 Ft

Location & Comments

@ Intersection of
Hooker (Elm) and
Ott Rd.

Compass Declination _____
Firm/Agency EDWARDS
SURVEYING

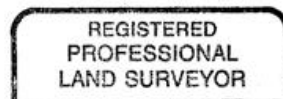
Address P.O. Box 763
Hermiston, OR 97838

Party Chief D. Edwards

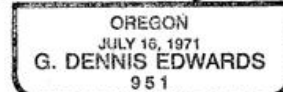
Notes _____

Witness J. Coppock

Surveyor's Seal



G. Dennis Edwards



RENEWS 12/31/95

RECEIVED BY _____

Umatilla County Surveyor _____

Date _____

Rec'd by _____

No. 95-59-B