

OREGON CORNER RESTORATION FORM

SECTION 5 TOWNSHIP 4N RANGE 28E CORNER LOCATION CODE A-9

COUNTY: UMATILLA DATE: March 1994

CORNER DESIGNATION  
NE CORNER

CONDITION REPORT ONLY  
 NOT FOUND  
 RENEWED  
 UNRECORDED  
 SURVEYED IN  
 REFERENCED OUT

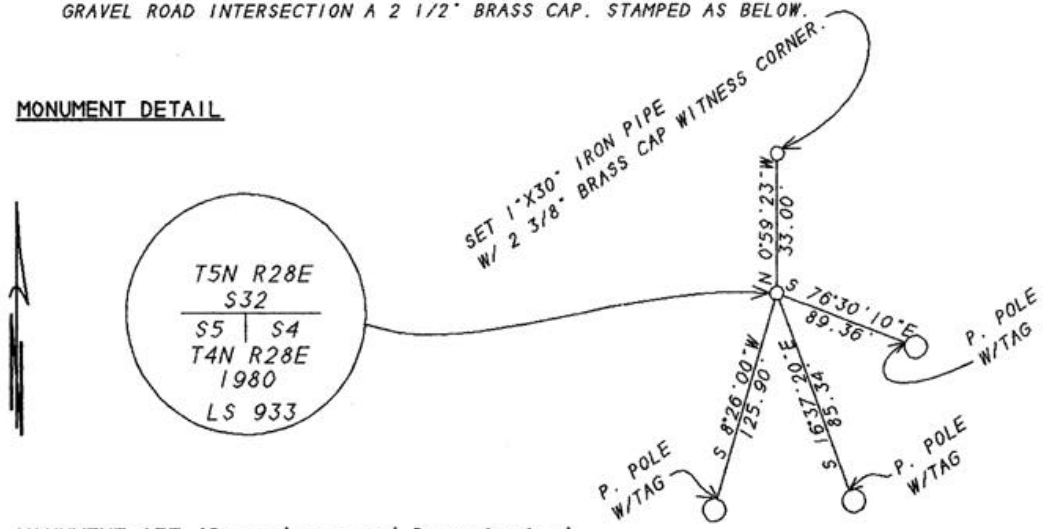
PREVIOUS RENEWALS/SURVEYS, ETC.

ORIGINAL SURVEY BY HAFT IN 1860. CONTRACT NO. 93.  
DEPENDENT RESURVEY BY GOULD IN 1941. ( SET 1 1/2" IRON PIPE ??? )  
IN 1980 KRUMBEIN REPLACED A FOUND 1 1/2" IRON PIPE WITH  
A 2 1/2" BRASS CAP.  
THIS SURVEY COUNTY NO. 94-022-C. EDWARDS FOR OREGON DOT..

MONUMENTS & ACCESSORIES FOUND: Condition and Source

FOUND IN GOOD CONDITION AND 6" BELOW SURFACE OF  
GRAVEL ROAD INTERSECTION A 2 1/2" BRASS CAP. STAMPED AS BELOW.

MONUMENT DETAIL



MONUMENT SET (Procedures and Description)

NO NEW MONUMENT SET.

NEW ACCESSORIES

2 3/8" BRASS CAP WITNESS CORNER BEARS N 0°59'23" W 33.00 FEET.  
ALUM. TAG #951 IN POWER POLE BEARS S 76°30'10" E 89.36 FEET.  
ALUM. TAG #951 IN POWER POLE BEARS S 16°37'20" E 85.34 FEET.  
ALUM. TAG #951 IN POWER POLE BEARS S 8°26'00" W 125.90 FEET.

LOCATION & COMMENTS

LOCATED AT THE INTERSECTION  
OF PRINGLE LOOP ROAD AND  
WALKER ROAD.

COMPASS DEC \_\_\_\_\_  
FIRM EDWARDS SURVEYING  
P.O. BOX 763  
HERMISTON, OR. 97838  
PARTY CHIEF D. EDWARDS  
NOTES J. COPPOCK  
WITNESS J. COPPOCK

SURVEYOR'S SEAL

REGISTERED  
PROFESSIONAL  
LAND SURVEYOR

*J. Dennis Edwards*

OREGON  
JULY 16, 1971  
G. DENNIS EDWARDS  
951

RENEWS 12/31/95

RECEIVED BY  
Umatilla County Surveyor  
Date 1-96  
By RC  
No. 96-12-R