

OREGON CORNER RESTORATION FORM

Section 1 Township 3N Range 27E
 County Umatilla Date: 06-14-02

Corner Designation: 3N27A25

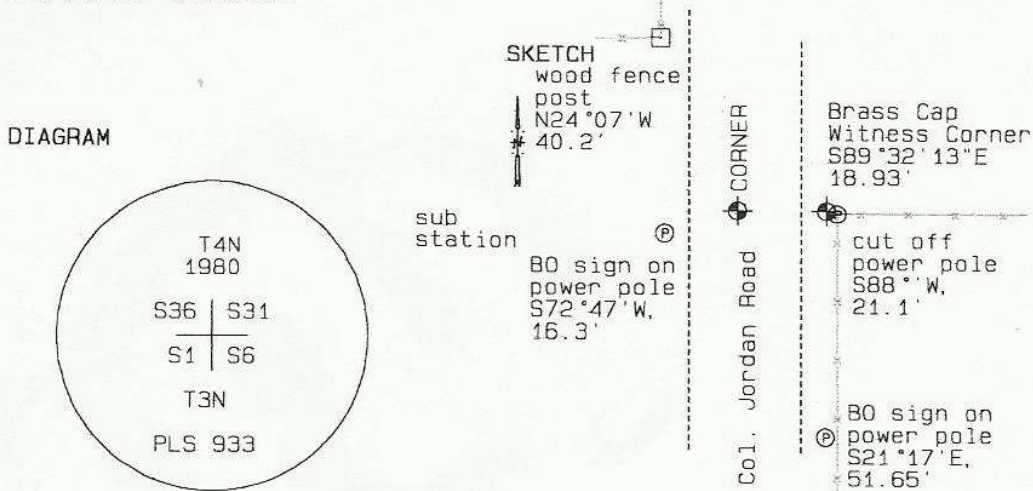
_____x_____	Condition Report Only
	Not Found
	Remonumented
	Unrecorded
_____x_____	Surveyed In
	Referenced Out

Previous Renewals / Surveys, etc.

The GLO set a witness corner here in 1940.
 Survey S-156-C set a brass cap here. Survey 97-115-C reported this corner.

Monument and Accessories Found: (condition and source)

Found both the brass caps described above in good condition.
 Bearing object tags on two nearby power poles correctly describe the corner location.



MONUMENT (S) AND ACCESSORIES SET (Procedures and Description)

None.

REFERENCES SET:

None.

Made GPS tie to TRI Station Stanfield East Base.
 Latitude 45°46'39.15185"N
 Longitude 119°22'21.05325"W
 NAD 83(1991)

Oregon State Plane Coord. - North Zone
 Northing 771591.84
 Easting 8489766.85
 Ortho Height 603.26
 Ellipsoidal Height 533.32

Location and Comments

From the Jct. of I84 with Westland Road, go south on gravel road 1.0 mile to substation on right. Corner is in road.

Compass Declination

20°E

Surveyors Seal

REGISTERED
PROFESSIONAL
LAND SURVEYOR

RECEIVED BY:

Date: 7-02
 Rec'd By: KE
 No. 02-1869

Firm / Agency

Haddock Surveying
 P. O. Box 1574
 Pendleton, OR 97801
 (541) 276-2174

David L. Haddock

OREGON
JULY 12, 1968
DAVID L. HADDOCK
852

RENEWS 6-30-03