

OREGON CORNER RESTORATION FORM

SECTION 27 TOWNSHIP 4 NORTH RANGE 27 EAST

T-17

COUNTY : UMATILLA DATE 12/02

CORNER DESIGNATION

E 1/4 CORNER

CONDITION REPORT ONLY

NOT FOUND

RENEWED

UNCOVERED

SURVEYED IN

REFERENCED

PREVIOUS RENEWALS / SURVEYS, ETC.

ORIGINALLY SURVEYED UNDER CONTRACT #209 IN 1874 BY WALDEN.
HARRIS 1966 SURVEY FOR UMATILLA COUNTY CS #C-20-B.

MONUMENTS AND ACCESSORIES FOUND: CONDITION AND SOURCE

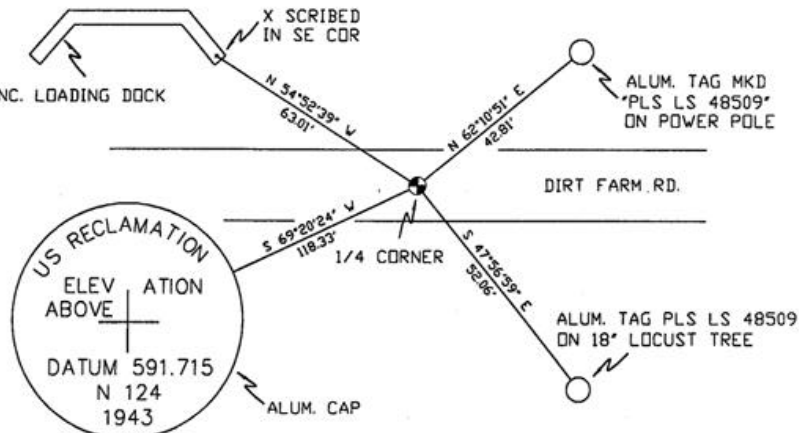
A 2 1/2" BRASS CAP.

MONUMENT DETAIL



NAD 83/91
OREGON STATE PLANE
INTERNATIONAL FEET

779382.5749
8479055.8271



MONUMENT SET (PROCEDURES AND DESCRIPTION)

NEW ACCESSORIES FROM WHICH

AN ALUMINUM TAG "PLS LS 48509" ON A POWER POLE LIES N 62°10'51" E, 42.81 FEET.
AN ALUMINUM TAG "PLS LS 48509" ON A 18" LOCUST TREE LIES S 47°56'59" E, 52.06 FEET.
AN ALUMINUM US RECLAMATION CAP LIES S 69°20'24" W, 118.33 FEET.
A SCRIBED "X" IN THE SE COR OF A CONC. LOADING DOCK LIES N 54°52'39" W, 63.01 FEET.

LOCATION AND COMMENTS

FROM THE INTERSECTION OF RAIL ROAD OVERPASS WITH MAIN ENTERANCE ROAD TO UMATILLA ARMY DEPOT ON NORTH SIDE OF I 84 GO SOUTH 0.1 MI. TO GRAVEL ROAD TO SOUTHEAST, FOLLOW GRAVEL ROAD 0.1 MI. SOUTHEAST THEN 0.35 MI. EAST TO CORNER, CORNER FALLS +/- 50 FEET NORTH OF WEST BOUND LANE I 84 NEAR 90° ANGLE POINT IN POWER LINE.

COMPASS DEC.

FIRM/AGENCY
PRIMM LAND SURVEYING
P.O. BOX 1322
HERMISTON, OREGON 97838

PARTY CHIEF
KEITH P. PRIMM

NOTES

WITNESS
BRIT L. PRIMM

SURVEYOR'S SEAL

REGISTERED
PROFESSIONAL
LAND SURVEYOR

Brit L. Primm
OREGON
JULY 13, 1999
BRIT L. PRIMM
48509

EXPIRATION DATE: 12/31/04

03-49-9