

OREGON CORNER RESTORATION FORM

SECTION 21 TOWNSHIP 4 NORTH RANGE 27 EAST

R-13

COUNTY : UMATILLA DATE 12/02

CORNER DESIGNATION

SE CORNER

- CONDITION REPORT ONLY
- NOT FOUND
- RENEWED
- UNCOVERED
- SURVEYED IN
- REFERENCED

PREVIOUS RENEWALS / SURVEYS, ETC.

ORIGINALLY SURVEYED UNDER CONTRACT #209 IN 1874 BY WALDEN.
HARRIS 1966 SURVEY FOR UMATILLA COUNTY CS #C-20-B.

MONUMENTS AND ACCESSORIES FOUND: CONDITION AND SOURCE

A 2 1/2" BRASS CAP.

MONUMENT DETAIL

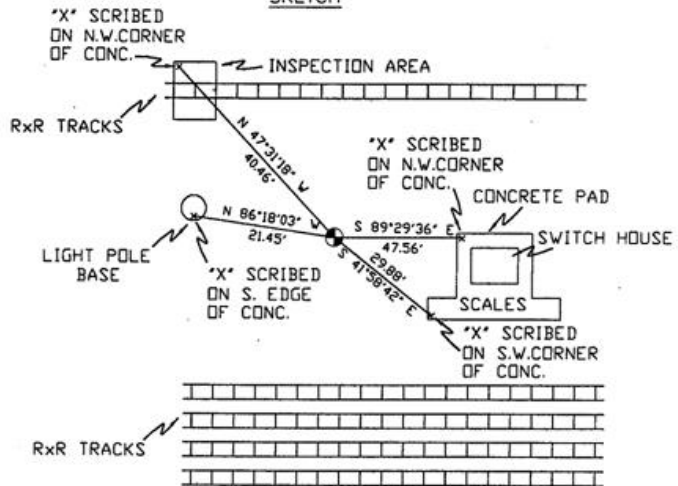


NAD 83/91
OREGON STATE PLANE
INTERNATIONAL FEET

781948.1831
8473765.1781



SKETCH



MONUMENT SET (PROCEDURES AND DESCRIPTION)

NEW ACCESSORIES FROM WHICH

- A SCRIBE IN THE N.W. CORNER OF A CONCRETE SLAB OF THE SWITCH HOUSE LIES S 89°29'36" E, 47.56 FEET.
- A SCRIBE IN THE S.W. CORNER OF A CONCRETE SLAB OF SCALES AREA LIES S 41°58'42" E, 29.88 FEET.
- A SCRIBE ON THE SOUTH EDGE OF A CONCRETE LIGHT POLE BASE LIES N 86°18'03" W, 21.45 FEET.
- A SCRIBE IN THE N.W. CORNER OF A CONCRETE INSPECTION PIT LIES N 47°31'18" W, 40.46 FEET.

LOCATION AND COMMENTS

FROM THE INTERSECTION OF COUNTY
LINE RD. WITH FRONTAGE RD. GO
NORTH 0.3 MI. TO CORNER,
CORNER FALLS WITHIN BOUNDS
OF UMATILLA ARMY DEPOT.

COMPASS DEC.

FIRM/AGENCY
PRIMM LAND SURVEYING
P.O. BOX 1322
HERMISTON, OREGON 97838

PARTY CHIEF
KEITH P. PRIMM

NOTES

WITNESS
BRIT L. PRIMM

SURVEYOR'S SEAL

REGISTERED
PROFESSIONAL
LAND SURVEYOR

BLP
OREGON
JULY 13, 1999
BRIT L. PRIMM
48509

EXPIRATION DATE: 12/31/04

03-49-9