

OREGON CORNER RESTORATION FORM

SECTION 24 TOWNSHIP 4 NORTH RANGE 27 EAST P-25
 COUNTY : UMATILLA DATE 10-2002

CORNER DESIGNATION

EAST 1/4

- CONDITION REPORT ONLY
- NOT FOUND
- RENEWED
- UNCOVERED
- SURVEYED IN
- REFERENCED

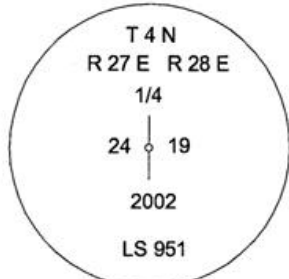
PREVIOUS RENEWALS / SURVEYS, ETC.

ORIGINAL SURVEY BY HAFT IN 1860. CONTRACT #93.
 DEPENDENT RESURVEY BY GOULD IN 1941.
 IN 1980 KRUMBEIN SET 2 1/2" BRASS CAP USING WRONG W.C. DISTANCE.
 IN 2002 EDWARDS SET 2 3/8" BRASS CAP BY RETRACING GOULD SURVEY.

MONUMENTS AND ACCESSORIES FOUND: CONDITION AND SOURCE

FOUND A 1"X30" IRON PIPE WITH A 2 3/8" BRASS CAP 3" BELOW SURFACE STAMPED AS BELOW.
 AN ALUMINUM TAG #951 ON A POWER POLE BEARS N3°40'57"W 204.82 FEET.
 A 5/8"X30" IRON REBAR WITH PLASTIC CAP #951 BEARS EAST 25.00 FEET.
 A 5/8"X30" IRON REBAR WITH PLASTIC CAP #951 BEARS WEST 25.00 FEET.
 A 2 1/2" BRASS CAP BEARS S83°51'29"E 8.44 FEET FROM CORNER 14" BELOW THE SURFACE
 OF ROAD WAY, KRUMBEIN 1980.

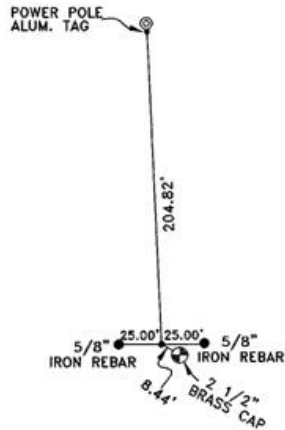
MONUMENT DETAIL



NAD 83/91
 OREGON STATE PLANE
 INTERNATIONAL FEET
 784809.8151
 8489591.1687



SKETCH



MONUMENT SET (PROCEDURES AND DESCRIPTION)

NA

NEW ACCESSORIES FROM WHICH

NA

COMPASS DEC.

SURVEYOR'S SEAL

LOCATION AND COMMENTS

AT THE INTERSECTION OF WALKER
 ROAD AND BRIDGE ROAD GO
 SOUTH ALONG WALKER ROAD
 1 1/2 MILES TO CORNER.

FIRM/AGENCY

EDWARDS SURVEYING
 P.O. BOX 763
 HERMISTON, OREGON 97838

PARTY CHIEF

CURTIS FAVOREL

NOTES

WITNESS

RICK SMITH

REGISTERED
 PROFESSIONAL
 LAND SURVEYOR

G. Dennis Edwards

OREGON
 JULY 16, 1971
 G. DENNIS EDWARDS
 9 5 1

RENEWS 12/31/2003

03-50-9