

Form 874-9—Revised May, 1918

U. S. DEPARTMENT OF AGRICULTURE
FOREST SERVICE

Umatilla NATIONAL FOREST

CORNERS OF THE PUBLIC SURVEY

T. 2-37 R. 38E 22 Mer.

Section Corner common to Sections
32, 33, 5 and 4

Corner consists of a Mound of rock (not) in place
State condition Good

Dimensions above ground 12 inches.
Sketch grooves, letters, figures, or notches, on proper face or edge.

CARDINAL POSITION				DIAGONAL POSITION			
N	W	S	E	NW	SW	SE	NE

Mound of _____ is located _____

Pits are located _____

Sketch markings of Bearing Trees (or Rocks) in proper box and fill blanks below, giving bearings from Corner to Trees and Distances in Links.

		T 2 N R 38 E S 4	
		BT	

Species _____ W. L. Snag
Diameter _____ 11"
Bearing _____ S 51 E
Distance _____ 8 Links

Do you believe this to be a genuine Land Office Corner? Yes

If not, why? _____

J. J. Monroe
Signature

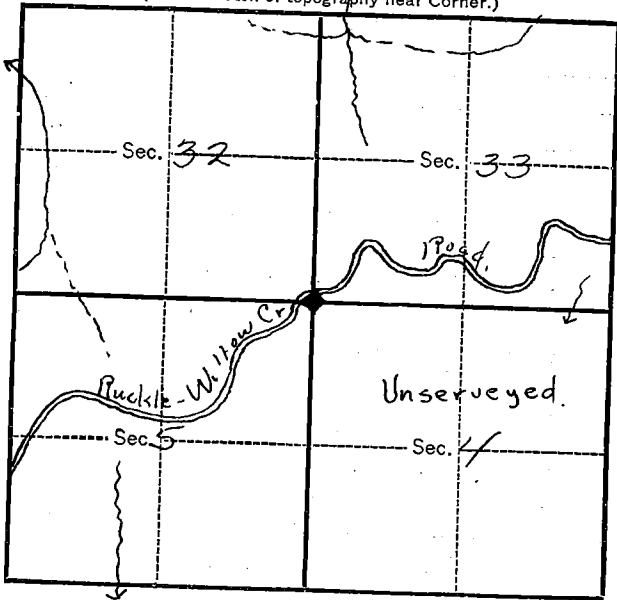
8-10-31
Date.

J. J.
Title

T. 2-37 R. 38 W Mer.

8-3027

(Make sketch of topography near Corner.)



Metal Location Poster is on a LP
tree 4 inches diameter, on the SW
side of Tree
from which this Corner bears S. 51 N
11 Links chains distant.

Give any further facts which will aid in finding this
Corner again.

Corner is found in a
W. 4 inch tree
A section line sign board
and corner tag has been
placed on road 2 1/2 chains
west of corner and on
road 1.27 chains
north of corner.

Form 874-9—Revised May, 1918

C
O
P
Y

U. S. Department of Agriculture

FOREST SERVICE

Umatilla NATIONAL FOREST

CORNERS OF THE PUBLIC SURVEY

T 2 & 3 N R. 38 E W Mer.

Section

Corner common to Sections

32, 33, 5, and 4

Corner consists of a Mound of rock (not) in place

State condition Good

Dimensions above ground 12 inches.

Sketch grooves, letters, figures, or notches, on proper face or edge.

CARDINAL POSITION

DIAGONAL POSITION

	11		1111				
N	W	S	E	NW	SW	SE	NE

Mound of is located

Pits are located

Sketch markings of Bearing Trees (or Rocks) in proper box and fill blanks below, giving bearings from Corner to Trees and Distances in Links.

		T2N R38E S4	
		BT	

Species WL snag

Diameter 11"

Bearing S51E

Distance 8 lks

Do you believe this to be a genuine Land Office Corner? Yes

If not, why?

/s/ F. D. Monroe

(Signature)

J. F.

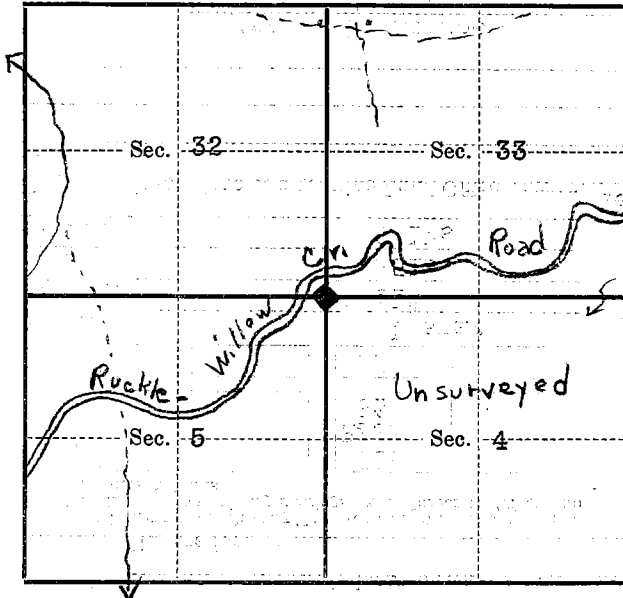
8/10/31

(Date)

(Title)

T. 2 & 3 N R. 38 E W Mer.

(Make sketch of topography near Corner)



Metal Location Poster is on a LP
tree 4 inches diameter, on the SW
side of tree
from which this Corner bears S51W
11 links ~~2000~~ distant.

Give any further facts which will aid in finding this
Corner again.

Corner is found in a WL thicket.
A section line sign board and cruiser
tag has been placed on road $2\frac{1}{2}$ chains
west of corner and on road 1.27 chains
north of corner.