

Form 874-9

U. S. DEPARTMENT OF AGRICULTURE  
FOREST SERVICE

Manitou NATIONAL FOREST ✓

CORNERS OF THE PUBLIC SURVEY

T. 3 N. R. 37 E. W. Mer.

Sec. Corner common to Sections

2, 3, 10, and 11

DESCRIPTION OF CORNER

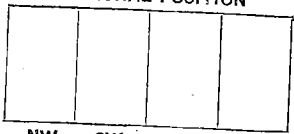
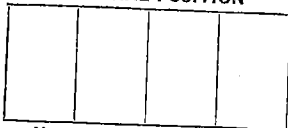
Corner consists of a pile of rock

Dimension above ground 6 inches.

Sketch grooves, letters, figures, or notches, on proper face or edge.

CARDINAL POSITION

DIAGONAL POSITION



Mound of \_\_\_\_\_ is located \_\_\_\_\_

Pits are located \_\_\_\_\_

Sketch markings of Bearing Trees (or Rocks) in proper box and fill blanks below, giving bearings from Corner to Trees and Distances in Links.

S-10  
T-3N  
R-37E

BT

Species Lch.

Diameter 32

Bearing S-35W

Distance 90

RECEIVED  
DEC 1 1931  
ANSWERS

Do you believe this to be a genuine Land Office Corner? Yes

If not, why? \_\_\_\_\_

Albert Baker

Signature.

Forest Ranger

Title.

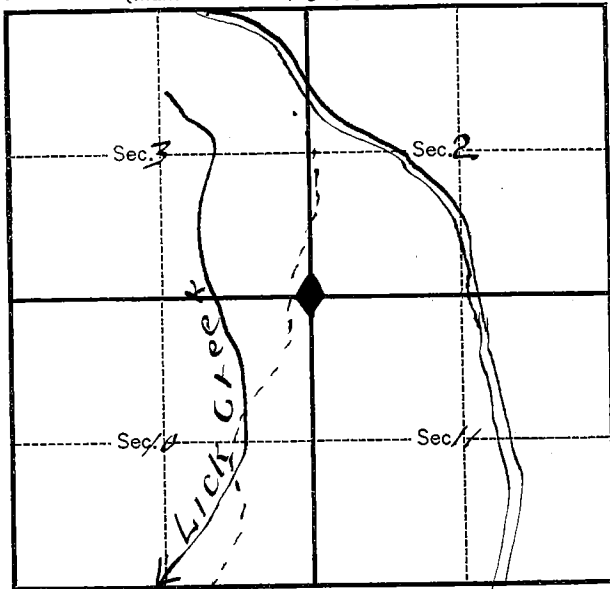
5-19-31

Date.

T. 3 N. R. 37 E. W. Mer.

8-3027

(Make sketch of topography near Corner.)



Metal Location Poster is on a DF  
tree 10 inches diameter, on the S.E.  
side of corner  
from which this Corner bears N 82 W.  
6 ft. chains distant.

Give any further facts which will aid in finding this  
Corner again.

On Lick creek trail about 1/2  
mile above salt ground #  
2 which is located in Lick  
Creek saddle.

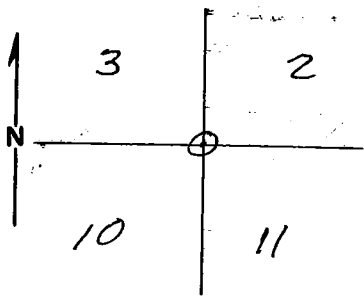
USDA-FOREST SERVICE

Index  
File No. E-17  
T 3N R. 37E  
Merid. WILL.

CORNER RECORD (SEARCH)

(Ref. FSM 7151.4)  
Tract or Survey No. \_\_\_\_\_ Cor. No. \_\_\_\_\_  
R.D. WALLA WALLA County UMATILLA  
N.F. UMATILLA State OR.

CORNER DIAGRAM



DESCRIBE CORNER MONUMENT FOUND

2 1/2" I. PIPE WITH 3 1/2" BLM BRASS CAP, MKD. ->  
6" ABOVE GROUND, GOOD CONDITION.

T3N R37E  
53 | 52  
510 | 511  
1980

DESCRIBE BEARING TREES OR OTHER OFFICIAL ACCESSORIES FOUND

0BT, 32" LARCH SNAG, DECAYED FACE W/PARTIAL SCRIBES, BRG. S41°W, 48.2 FT.  
0BT, 29" LARCH STUMP, NO MARKS VISIBLE, BEARS N 3°W 77.9 FT.  
14 1/2" FIR, SCRIBES "T3N R37E S 2BT" VISIBLE, BEARS N 22 1/2° E, 4.3 FT.  
13" LARCH, SCRIBES "T3N R37E S 11BT" VISIBLE, BEARS S 38 1/2° E, 65.7 FT.  
12" LARCH SNAG, "T3N R37E S 10BT" VISIBLE, BEARS S 66°W, 35.0 FT.  
13" FIR, SCRIBES "T3N R37E S 3BT" VISIBLE, BEARS N 61 1/4° W, 13.5 FT.

DESCRIBE CORNER LOCATION RELATIVE TO NEAR-BY FEATURES, ALSO HOW TO REACH CORNER

CORNER LIES ON GENTLE W. SLOPE, ABOUT 30 FT. S. OF A SHALLOW DRAW, COURSE W.

PHOTO IDENTIFICATION DATA

Photo No. \_\_\_\_\_  
Filed At. \_\_\_\_\_  
Object Ident. \_\_\_\_\_  
Ident. By \_\_\_\_\_  
Signature \_\_\_\_\_

PLANE COORDINATE POSITION DATA

State \_\_\_\_\_ Zone \_\_\_\_\_  
X \_\_\_\_\_  
Y \_\_\_\_\_  
Estab. By \_\_\_\_\_  
Agency \_\_\_\_\_

Signature Veter M Ford Title LS Division \_\_\_\_\_ Headquarters \_\_\_\_\_ Date 6-26-86 FS-7100-52 (3/68)

CORNER RECORD (PERPETUATION)

MONUMENT: DESCRIBE NEW MONUMENT SET, OR WORK DONE TO PRESERVE EXISTING MONUMENT

9

ACCESSORIES : DESCRIBE NEW BT'S WITNESS OBJECTS ETC. ESTABLISHED, OR WORK DONE TO PRESERVE EXISTING EVIDENCE

SET STEEL POSTS ABOUT 3 FT. N. AND 3 FT. E. OF COR., WITH SIGNS 54-2 AND 54-9.  
PAINTED A RED BAND AROUND BT'S.  
NAILED SIGN 54-4 TO BACK OF N.E. BT AND S.W. OBT.  
OTHER TREES ALREADY HAVE SIGNS 54-4 AND ALL BT'S HAVE SIGNS 54-3

10

Work Done By V. McLIND Title LS Date 6-26-86 State Registration No. 934  
or Agency

Certified Cor. Record Prepared? Yes  No Filed At: Date

11

REMARKS

12

Index File No. E-17 T. 3N R. 37E M. WILL. Tract or Surv. No. Cor. 13