

OREGON CORNER RESTORATION FORM

Section: 2, 3 Township: 3N Range: 33E
County: Umatilla Date: 3/23/2011

Corner Designation: 3N33C17 (Amended 4/2/2012)

Quarter corner common to Sections 2, 3, T3NR33E.

_____	Condition Report Only
X	Not Found
X	Remonumented
_____	Unrecorded
X	Surveyed In
X	Referenced Out

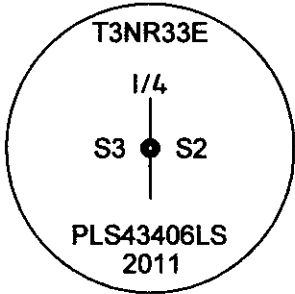
Previous Renewals / Surveys, etc.

Originally surveyed by Chaplin in 1864. He set a post in a mound of earth.

Monuments and Accessories Found: (Condition and Source):

None.

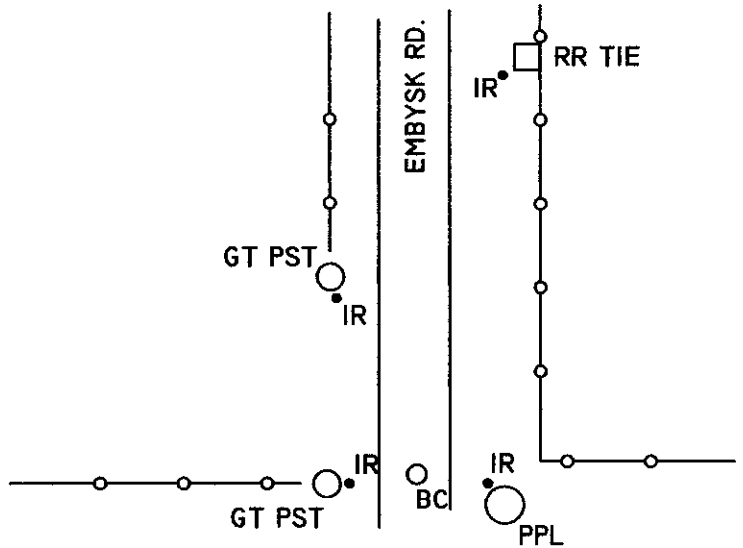
Diagram



NAD 83/91
OREGON STATE PLANE NORTH
INTERNATIONAL FEET

N771604.45
E8670807.37

Sketch



Monument(s) Set (Procedures and Description):

A 1 1/8" x 30" galvanized iron pipe with a 2 1/2" brass cap, stamped as shown above, 10" below the surface. The corner was reestablished by holding an ancient East-West fence line for Northing and by holding the line between found corners to the North and South for Easting.

References Set:

- A 5/8" x 30" iron rebar w/ RPC #43406 lies N 19° W, 34.25', at a gate post.
- A 5/8" x 30" iron rebar w/ RPC #43406 lies N 19° 15' E, 68.70', at a railroad tie post.
- A 5/8" x 30" iron rebar w/ RPC #43406 lies S 88° E, 24.74', at a power pole.
- A 5/8" x 30" iron rebar w/ RPC #43406 lies S 86° W, 9.86', at a gate post.

Location and Comments:

The corner is located 1/2 mile South of the intersection of Midway Rd. and Embysk Rd.

Compass Declination

17° E

Surveyors Seal

REGISTERED
PROFESSIONAL
LAND SURVEYOR

Robert D. English
OREGON
JANUARY 11, 2005
ROBERT DOUGLAS ENGLISH
43406LS

RENEWAL DATE: 12/31/13

RECEIVED BY:

Firm / Agency

Date: 7/10/2012
Rec'd By: A. Oles
No. 12-094-C

Survey One, LLC.
P.O. Box 382
Pendleton, OR 97801
(541) 276-2055