

**OREGON CORNER RELOCATION FORM**

Section 27 Township 3N Range 32E  
 County Umatilla Date: August 14, 1997

Corner Designation: 3N32T15

Center 1/4 corner to section 27, T3N, R32E W.M.

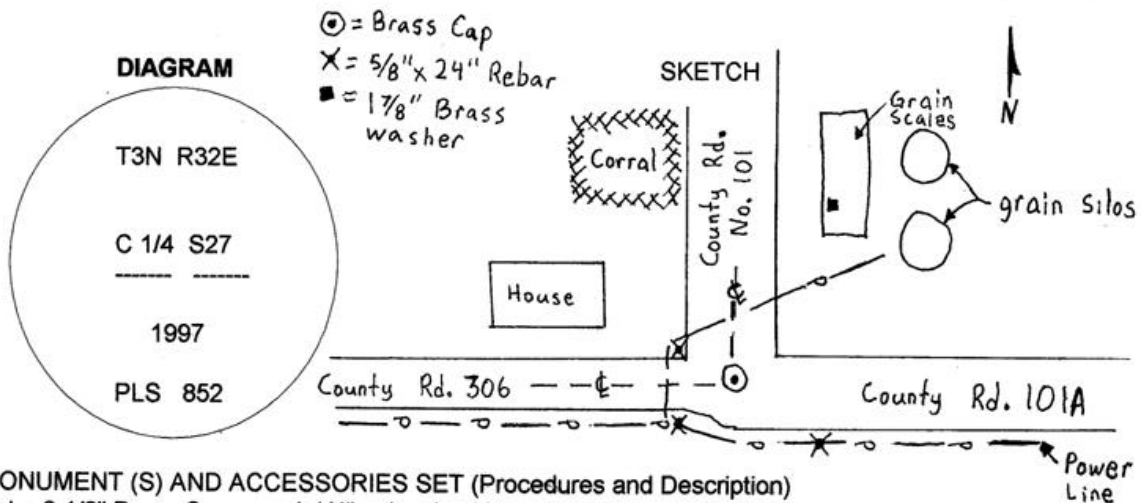
Condition Report Only  
 Not found  
 Remonumented  
 Unrecorded  
 Surveyed in  
 Referenced out

Previous Renewals / Surveys, etc.

This corner was established by Umatilla County Surveyor John L. Arnold as the point of beginning for County Road No. 306. His record reads: Set initial post 45 links east and 15 links north of center of section 27.

Monument and Accessories found: ( condition and source )

None.



**MONUMENT (S) AND ACCESSORIES SET (Procedures and Description)**

Set a 2 1/2" Brass Cap on a 1 1/4" galvanized iron pipe 6" below the surface at the intersection of county roads No. 306 and No. 101

For references, I set three 5/8" by 24" rebars with 1.25" red plastic caps stamped ORLS 852 and WALS 13922 as described below:

- a rebar bears S70°58'W, 36.23 feet at the foot of a power pole;
- a rebar bears S48°56'E, 77.64 feet at the foot of a power pole;
- a rebar bears N46°43'W, 47.48 feet at the foot of a power pole;
- a 1 7/8" brass washer on a 6"x1/4" nail driven in the cement foundation of a grain scales bears N33°14'E, 90.33 feet;

The monument was tied using two Wild System 200 GPS receivers references tied using a Geodimeter system 600, 3 second Electronic Total Station.

Location and comments  
 Witnessed by Mathew Severe

Compass Declination

Surveyors Seal

RECEIVED BY:  
Umatilla County Surveyor  
 Date: 9-97  
 Rec'd By: SK  
 No. 97-122-B

Firm / Agency  
 Haddock Surveying  
 Address  
 P.O. Box 1574  
 Pendleton, Or. 97801  
 Party Chief  
 Stephen K, Haddock

REGISTERED  
 PROFESSIONAL  
 LAND SURVEYOR

*David L. Haddock*

OREGON  
 JULY 12, 1966  
 DAVID L. HADDOCK  
 852