

**OREGON CORNER RESTORATION FORM**

COUNTY: Umatilla DATE: 04/19/06

CORNER DESIGNATION: 3N31, T-17, The West One-Quarter Corner of Section 26.

PREVIOUS RENEWALS/SURVEYS ETC.: Corner originally established by D. S. Payne, under Contract No. 100, dated August 1, 1861. Record states: Set charred stake with mound, trench and pits as per insts. for qr. sec. corner.

MONUMENT AND ACCESSORIES FOUND: None.

**MONUMENT MARKING DETAIL:**

T3N R31E  
1  
4  
S27 | S26  
2006  
PLS 1106

**MONUMENT SET:**

Re-established corner on a line between the reestablished Northeast and Southeast corners of Section 27. I held the existing East-West field berm through the corner for latitude. At reestablished corner position, set a 2 3/8" brass cap on 1 1/4" x 30" galvanized iron pipe with cap 15" below ground level. Monument marked as shown in monument marking detail.

From which:

- A silver Deep-1 magnet buried 22" below ground level bears North 49 1/2° West, 37.5 feet.
  - A blue Deep-1 magnet buried 22" below ground level bears South 39 1/2° West, 40.8 feet..
  - A purple Deep-1 magnet buried 22" below ground level bears South 44° West, 42.3 feet.
  - An orange Deep-1 magnet buried 22" below ground level bears North 40 1/2° West, 40.0 feet.
- Buried bearing object signs with all magnets. Set steel fence post with witness post sign 1 foot East of monument.

LOCATION AND COMMENTS: Corner is located in a farmed field in a East-West field berm.

OREGON STATE PLANE COORDINATE, North Zone, NAD 83(91), International Feet:

N = 749418.55  
E = 8607597.91

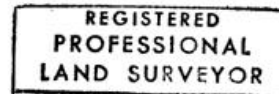
FIRM: William R. Wells, PLS  
P.O. Box 1696  
Pendleton, OR 97801

COMPASS DECLINATION: 18° East

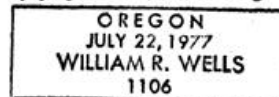
Surveyor's Seal

Witnesses: Jason Wells, LSIT

/2N31T17



*William R. Wells*



renews 6-30-08

01412-0