

OREGON CORNER RESTORATION FORM

COUNTY: Umatilla DATE: 5/6/15

CORNER DESIGNATION: The West One-Quarter Corner of Section 8, Township 3 North, Range 31 East, G-5.

PREVIOUS RENEWALS/SURVEYS ETC.: Corner originally established by by D.S. Payne, under Contract No. 100, dated 8/1/1861, notes state: Set charred stake with mound trench and pits as per instrs. for 1/4 sec corner.

MONUMENT AND ACCESSORIES FOUND: None.

MONUMENT MARKING DETAIL:

T3N R31E
1/4
S7|S8
2015
PLS 54657

MONUMENT SET: No physical features remain, falls in CRP field. Reestablished corner by single proportion measure between the Southwest and Northwest corners of Section 8 using the Payne record. At the reestablished corner point, set a 2 3/8" brass cap on a 1 1/4" x 30" galvanized iron pipe with top 20" below ground level marked as shown in "Monument Marking Detail".

From which:

- A silver deep-1 magnet, buried 20" in the ground, bears North 59° East, 31.6 feet.
 - A pink deep-1 magnet, buried 20" in the ground, bears South 47° East, 33.3 feet.
 - A blue deep-1 magnet, buried 20" in the ground, bears South 51° West, 30.9 feet.
 - An orange deep-1 magnet, buried 20" in the ground, bears North 46° West, 33.8 feet.
- Buried bearing object tags with all magnets.

LOCATION AND COMMENTS: Corner falls in a CRP field.

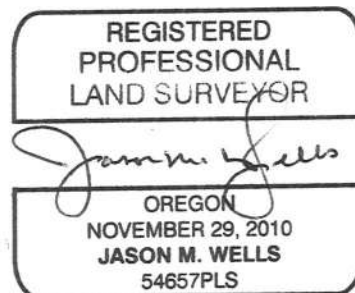
OREGON STATE PLANE COORDINATE, North Zone, NAD 83(91), International Feet:
N = 765254.28
E = 8591515.17

FIRM: Wells Surveying
P.O. Box 1696
Pendleton, OR 97801

COMPASS DECLINATION: 18° East Surveyor's Seal

Witnesses: Jason Wells, PLS
Dean Roy

/3N31G5



RENEWS: 6-30-16

15 - 052 - c