

# OREGON CORNER RESTORATION FORM

COUNTY: Umatilla DATE: 5/5/15

CORNER DESIGNATION: The North One-Quarter Corner of Section 7, Township 3 North, Range 31 East, E-3.

PREVIOUS RENEWALS/SURVEYS ETC.: Corner originally established by D.S. Payne, under Contract No. 100, dated 8/1/1861, notes state: Set charred stake with mound trench and pits as per instrs. for 1/4 sec corner.

MONUMENT AND ACCESSORIES FOUND: None.

MONUMENT MARKING DETAIL:

T3N R31E  
1 S6  
4 S7  
2015  
PLS 54657

MONUMENT SET:

No physical evidence of the corner remains. Corner point falls in CRP field. Reestablished corner on the parallel of latitude by proportional measurement using the original Payne record and set a 2 3/8" brass cap on a 1 1/4" x 30" galvanized iron pipe, with top 20" below ground surface, stamped as shown in "Monument Marking Detail".

From which:

- A silver deep-1 magnet, 20" below ground level, bears North 37° East, 29.7 feet.
- A pink deep-1 magnet, 20" below ground level, bears South 44° East, 26.0 feet.
- A blue deep-1 magnet, 20" below ground level, bears South 24° West, 35.4 feet.
- An orange deep-1 magnet, 20" below ground level, bears North 76° West, 35.0 feet.

Buried bearing object tags with the magnets.

LOCATION AND COMMENTS: Corner located in a CRP field with no features.

OREGON STATE PLANE COORDINATE, North Zone, NAD 83(91), International Feet:

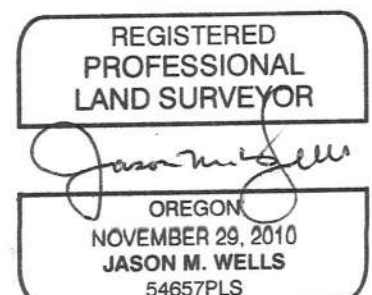
N = 767884.90  
E = 8588843.60

FIRM: Wells Surveying  
P.O. Box 1696  
Pendleton, OR 97801

COMPASS DECLINATION: 18° East  
Witnesses: Jason Wells, PLS  
Dean Roy

Surveyor's Seal

/3N31E3



RENEWS: 6-30-16

15-052-c