

**OREGON CORNER RESTORATION FORM**

Section 23,24,25,26

Township 3N

Range 29E

County Umatilla

Date: 1/20/09

Corner Designation: 3N29R21

Section corner common to T3NR29E sections 23,24,25, and 26.

- Condition Report Only
- Not Found
- Remonumented
- Unrecorded
- Surveyed In
- Referenced Out

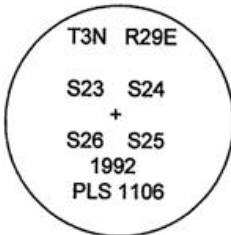
**Previous Renewals / Surveys, etc.**

Originally Surveyed by Gates in 1859. He set a post in a mound of earth.  
In 1992 Wells set a 2 1/2" B.C. in an accepted fence corner.  
In 2002 Haddock found a 2 1/2" B.C.

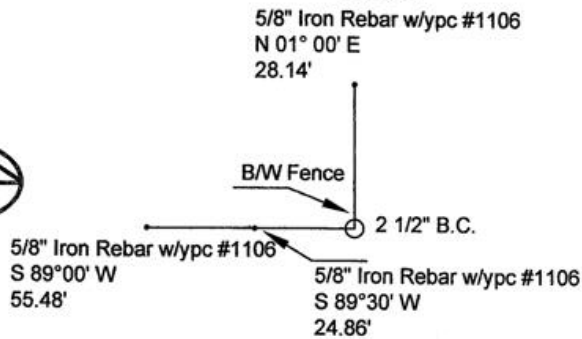
**Monuments and Accessories Found: (Condition and Source)**

- A 2 1/2" B.C.
- A 5/8" iron rebar w/ypc lies N 01° 00' E, 28.14'.
- A 5/8" iron rebar w/ypc lies S 89° 30' W, 24.86'.
- A 5/8" iron rebar w/ypc lies S 89° 00' W, 55.48'.

**Diagram**



**Sketch**



NAD 83/91  
OREGON STATE PLANE NORTH  
INTERNATIONAL FEET

N751166.06  
E8548837.60

LAT - 45° 43' 08.54420" N  
LON - 119° 08' 32.55864" W

**Monument (s) Set (Procedures and Description)**

None.

**References Set:**

None.

**Location and Comments**

From Echo school so Southeast on Reith Rd. approx. 3.7 miles. The corner is located on the hill North of the road across the irrigation canal 1.0 miles.

**Compass Declination**

17° E

**Surveyors Seal**

REGISTERED  
PROFESSIONAL  
LAND SURVEYOR

*Robert D. English*  
OREGON  
JANUARY 11, 2005  
ROBERT DOUGLAS ENGLISH  
43406LS

**RECEIVED BY:**

Date: 1-11  
Rec'd By: KK  
No. 11-17-R

**Firm / Agency**

Survey One, LLC.  
P.O. Box 382  
Pendleton, OR 97801  
(541) 276-2055

RENEWAL DATE: 12/31/09