

OREGON CORNER RESTORATION FORM

Section 20,21 Township 3N
County Umatilla Date: 03/05/10

Range 29E

Corner Designation: 3N29P9

Corner common to Sections 20,21, T3NR29E.

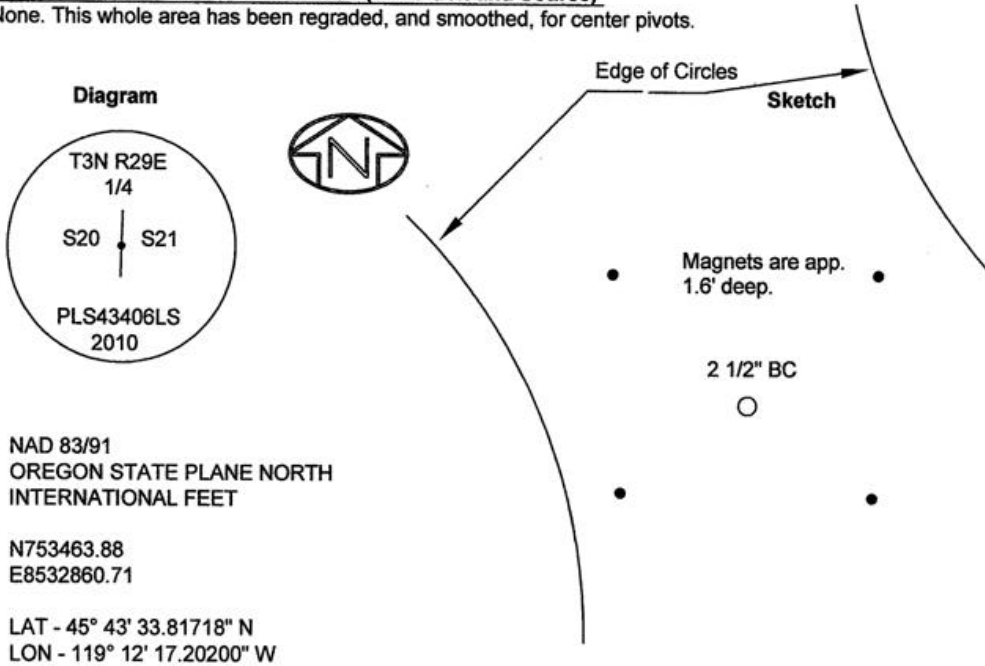
_____	Condition Report Only
<u> X </u>	Not Found
<u> X </u>	Remonumented
_____	Unrecorded
<u> X </u>	Surveyed In
<u> X </u>	Referenced Out

Previous Renewals / Surveys, etc.

Originally Surveyed by Gates. He set a post in a mound of earth in 1859.

Monuments and Accessories Found: (Condition and Source)

None. This whole area has been regraded, and smoothed, for center pivots.



NAD 83/91
OREGON STATE PLANE NORTH
INTERNATIONAL FEET

N753463.88
E8532860.71

LAT - 45° 43' 33.81718" N
LON - 119° 12' 17.20200" W

Monument (s) Set (Procedures and Description)

A 1 1/4" x 30" galvanized iron pipe with a 2 1/2" brass cap, buried 23" below surface. Cap marked as shown above.

References Set: "Deep One" magnets by Berntsen.

- An Orange magnet, 19" deep, lies N 43°30' W, 18.69'.
- A Silver magnet, 19" deep, lies N 45°20' E, 14.55'.
- A Pink magnet, 19" deep, lies S 28°50' E, 22.35'.
- A Blue magnet, 18" deep, lies S 47°45' W, 19.96'.

Location and Comments

The corner is 1.2 miles South of the intersection of Hwy 320. and Snow Road and .5 miles East.

Compass Declination
17° E

Surveyors Seal

REGISTERED
PROFESSIONAL
LAND SURVEYOR

Robert D. English
OREGON
JANUARY 11, 2005
ROBERT DOUGLAS ENGLISH
43406LS

RECEIVED BY:

Date: 1-11
Rec'd By: KK
No. 11-16-R

Firm / Agency

Survey One, LLC.
P.O. Box 382
Pendleton, OR 97801
(541) 276-2055

RENEWAL DATE: 12/31/11