

OREGON CORNER RESTORATION FORM

Section 14,23 Township 3N Range 29E
County Umatilla Date: 05/03/10

Corner Designation: 3N29N19

Corner common to section 14 and 23 T3NR29E.

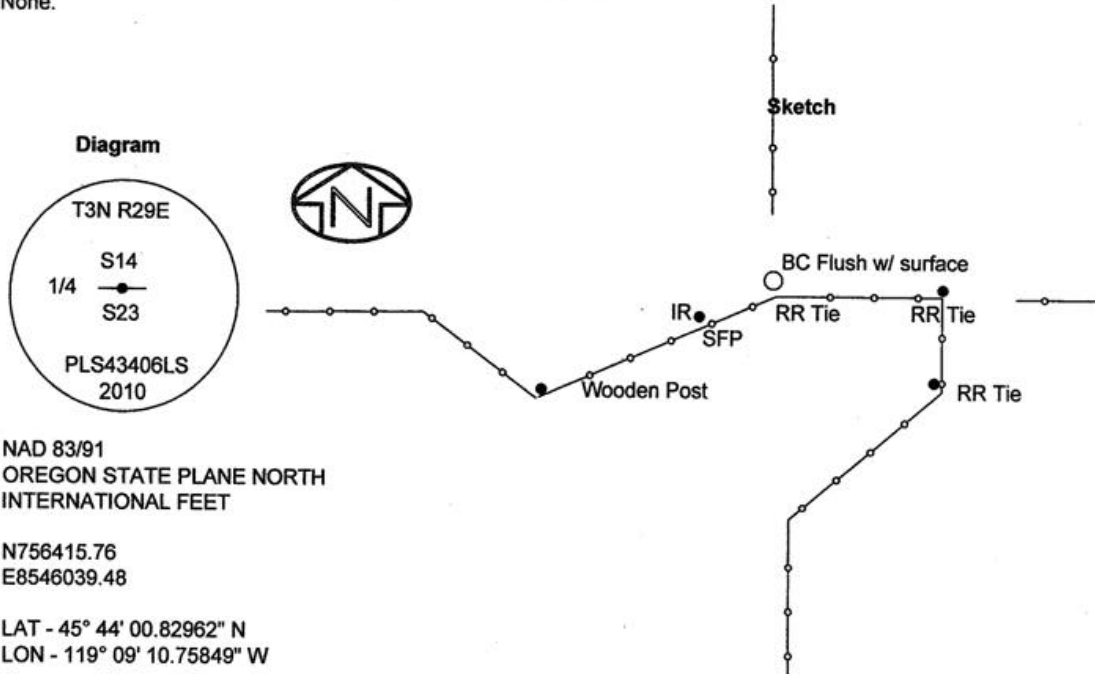
- Condition Report Only
- Not Found
- Remonumented
- Unrecorded
- Surveyed In
- Referenced Out

Previous Renewals / Surveys, etc.

Originally Surveyed by Gates in 1859. He set a post in a mound of earth.

Monuments and Accessories Found: (Condition and Source)

None.



NAD 83/91
OREGON STATE PLANE NORTH
INTERNATIONAL FEET

N756415.76
E8546039.48

LAT - 45° 44' 00.82962" N
LON - 119° 09' 10.75849" W

Monument (s) Set (Procedures and Description)

A 1 1/2" x 30" galvanized iron pipe with a 2 1/2" Brass cap, stamped as shown above. Corner was re-established by holding the intersection of ancient North-South and East-West fences. This position is nearly perfectly online between monuments to the West and East, and is approximately 55' West of a proportionate position. These fences appear to have delineated ownership for a long period of time and are held as best evidence.

References Set:

- A 5/8" x 30" Iron rebar w/rpc #43406 lies S 61°30' W, 14.24'.
- A pk and Brass washer #43406 lies S 60°15' W, 40.04'.
- A pk and Brass washer #43406 lies S 88° E, 20.65'.
- A pk and Brass washer #43406 lies S 59°30' E, 22.90'.

Location and Comments

The corner is 1 mile South and 1.5 miles West of the intersection of Coppinger Lane and Hwy. 320.

Compass Declination
17° E

Surveyors Seal

REGISTERED
PROFESSIONAL
LAND SURVEYOR

Robert D. English
OREGON
JANUARY 11, 2005
ROBERT DOUGLAS ENGLISH
43406LS

RENEWAL DATE: 12/31/11

RECEIVED BY:

Date: 1-11
Rec'd By: KR
No. 11-15-R

Firm / Agency

Survey One, LLC.
P.O. Box 382
Pendleton, OR 97801
(541) 276-2055