

OREGON CORNER RESTORATION FORM

Section 16 Township 3N
County Umatilla Date: 08/31/09

Range 29E

Corner Designation: 3N29L13

1/4 Corner common to sections 15 and 16, T3NR29E.

- Condition Report Only
- Not Found
- Remonumented
- Unrecorded
- Surveyed In
- Referenced Out

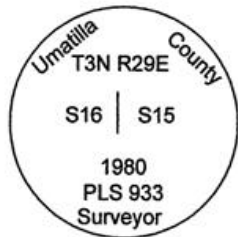
Previous Renewals / Surveys, etc.

Originally Surveyed by N.H. Gates in 1859. He set a post in a mound of earth.
Haddock visited a 2 1/4" Brass Disc on a galvanized iron pipe at the foot of a railroad tie fence corner, March 1998.

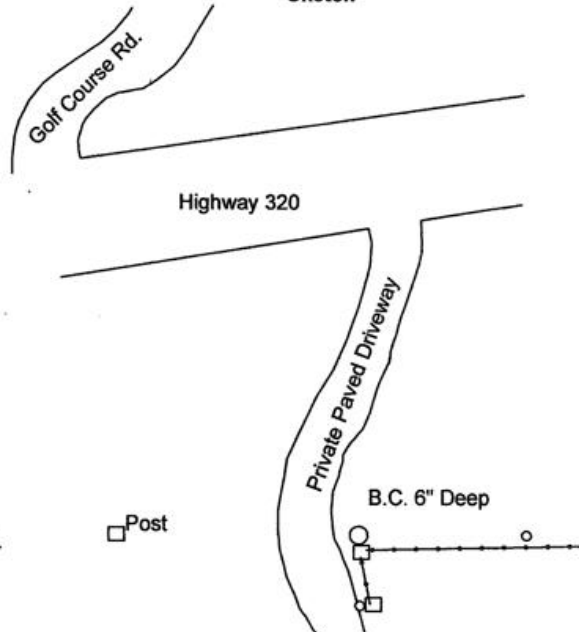
Monuments and Accessories Found: (Condition and Source)

Found A 2.5" B.C.
Found B.O. Tag on a RR Tie fence post S 86°30' E, 38.00'.
Found B.O. Tag on a RR Tie fence post S, 0.30'.

Diagram



Sketch



NAD 83/91
OREGON STATE PLANE NORTH
INTERNATIONAL FEET

N758917.72
E8538135.97

LAT - 45° 44' 26.81409" N
LON - 119° 11' 01.59639" W

Monument (s) Set (Procedures and Description)
None.

References Set:

A 5/8" x 30" Iron rebar w/ypc #43406 lies S 16°00' E, 6.59'.
A 5/8" x 30" Iron rebar w/ypc #43406 lies N 87°15' E, 24.98'.

Location and Comments

The corner is approximately 200' east up highway 320 from the intersection of Hwy 320 and Golf Course Road. Then up the hill to the south approximately 250'.

Compass Declination
17° E

Surveyors Seal

REGISTERED
PROFESSIONAL
LAND SURVEYOR

Robert D. English
OREGON
JANUARY 11, 2005
ROBERT DOUGLAS ENGLISH
43406LS

RECEIVED BY:

Date: 1-11
Rec'd By: KK
No. 11-14-R

Firm / Agency

Survey One, LLC.
P.O. Box 382
Pendleton, OR 97801
(541) 276-2055

RENEWAL DATE: 12/31/09