

GPS CONTROL STATION

OREGON STATE PLANE, NORTH ZONE

STATION NAME: 3N29J9 GEODETIC COORDINATE: NAD 83(91)

SECTION: SW COR S9 LAT: 45°44'52.61417" N  
T. 3N., R. 29 E., W. M. LONG: 119°12'16.59076" W  
UMATILLA COUNTY  
OREGON

STATE PLANE CO-ORDINATES,  
NAD 83-91, INT. FT. :

DATE SURVEYED: March, 1998

N: 761444.641

E: 8532776.107

SURVEYOR: DAVID L. HADDOCK  
PLS 852

THETA: 0°55'7.22"

SCALE FACTOR: 0.99994669

ELEV: 623

FIRM: HADDOCK SURVEYING  
P. O. BOX 1574  
PENDLETON, OR 97801  
(541) 276-2174

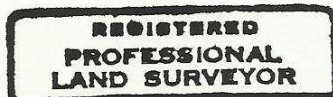
ELEV. DATUM: NGVD29

HORIZONTAL ORDER: SECOND ORDER,  
CLASS I

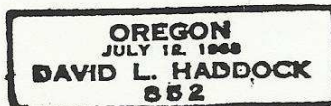
---

LOCATION: From the intersection of Garden St. and Thielson St. in the City of Echo, go northwest on Thielson St approximately 300' and go west on the access road on the north side of the rail road tracks. Follow the railroad tracks west approximately 1/4 mile. The corner is on the north side of the tracks approximately 30' from the center of the rails. There are two caps at this location and the filed corner certificate should be consulted when using this corner. The coordinates shown on this form are for the cap stamped 1998, PLS852.

STATION: Station is a 2 1/4 inch brass disc on a galvanized iron pipe flush with the surface of the ground.



*David L. Haddock*



**OREGON CORNER RESTORATION FORM**

Section 9 Township 3N Range 29E  
 County Umatilla Date: May 11, 1998

Corner Designation: 3N29J9

Condition Report Only  
 Not found

Section corner common to sections 8, 9, 16, and 17,  
 T3N, R29E, W.M.

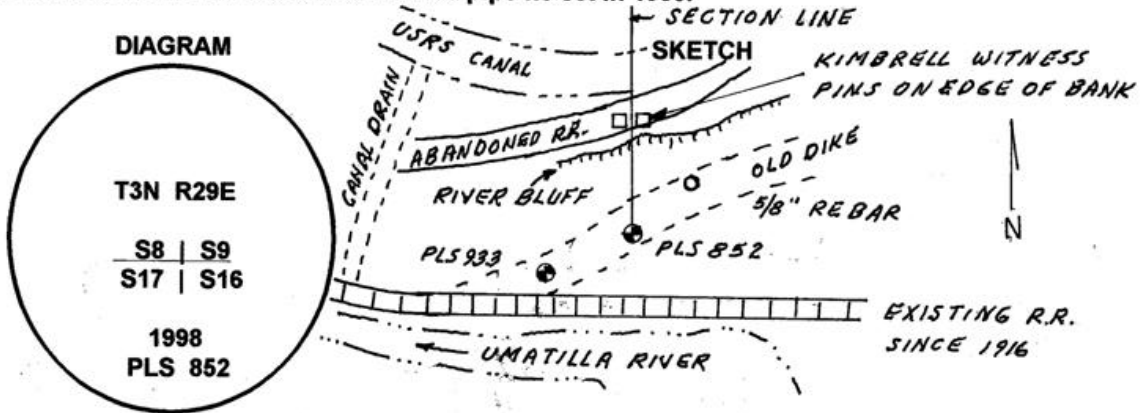
Remonumented  
 Unrecorded  
 Surveyed in  
 Referenced out

Previous Renewals / Surveys, etc.

Corner originally established by Gates in 1859 under contract No. 84 was a post in a mound of earth with charcoal for a witness corner 150 links north of the true point. John Kimbrell set a witness pipe 1 1/2" x 32" and four iron witness pins NE, NW, SW, and SE four feet distant from the pipe and 130 links north of the corner point in a survey recorded in book 1, page 582 of the record of private surveys. PLS 933 established a point for this corner in survey I-202-Ax and set a brass cap.

**Monument and Accessories found: ( condition and source )**

Found the brass cap set by PLS 933 in good condition. Found the witness pins set by Kimbrell on the north side of the witness pipe he set in 1905.



**MONUMENT (S) AND ACCESSORIES SET (Procedures and Description)**

Set a 2 1/4" brass cap on a 1 1/2" x 30" galvanized iron pipe at the corner position identified by the witness pins set by John Kimbrell in 1905.

**REFERENCES SET:**

The brass cap set by PLS 933 in survey I-202-Ax bears S73°53'45"W, 37.24 feet.  
 A 5/8" x 24" rebar with a 1 1/8" red plastic cap stamped ORLS 852 and WALS 13922 bears N66°10'34"E, 21.58 feet.

A 3/4" square iron pin set by John Kimbrell in 1905 bears N2°55'02"E, 86.92 feet, 1 foot below the surface.

A 3/4" square iron pin set by John Kimbrell in 1905 bears N2°11'19"W, 86.88 feet, 1 foot below the surface.

Location and comments

Compass Declination

Surveyors Seal

RECEIVED BY:  
Umatilla County Surveyor  
 Date: 8-98  
 Rec'd By: AK  
 No. 98-155-C

Firm / Agency  
 Haddock Surveying  
 Address  
 P.O. Box 1574  
 Pendleton, Or. 97801  
 Party Chief  
 Stephen K, Haddock

REGISTERED  
 PROFESSIONAL  
 LAND SURVEYOR

*David L. Haddock*

OREGON  
 JULY 12, 1989  
 DAVID L. HADDOCK  
 852

RECEIVED BY

RECEIVED Umatilla County Surveyor  
 Date: \_\_\_\_\_  
 Rec'd By: \_\_\_\_\_  
 No. \_\_\_\_\_