

OREGON CORNER RESTORATION FORM

Section 11,12 Township 3N
County Umatilla Date: 08/20/10

Range 29E

Corner Designation: 3N29G21

1/4 Corner common to Sections 11 and 12, T3NR29E.

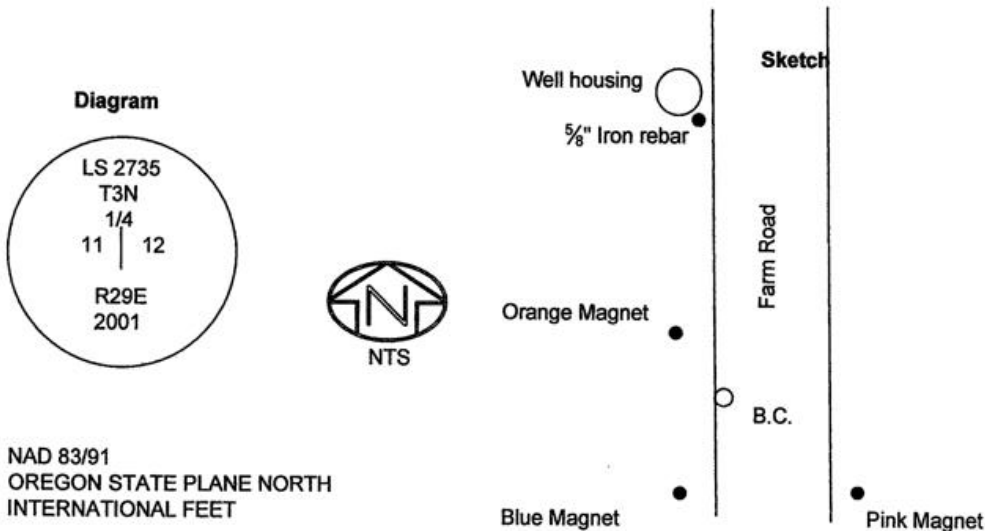
- Condition Report Only
- Not Found
- Remonumented
- Unrecorded
- Surveyed In
- Referenced Out

Previous Renewals / Surveys, etc.

Originally Surveyed by Gates in 1859. He set a post in a mound of earth. Baalman set a 1 1/2" Brass cap by single proportionate measure from a double proportionate sectional breakdown. We held this position although our calculations would put the monument 5.2' W of it's current location.

Monuments and Accessories Found: (Condition and Source)

Found a 2 1/2" Brass cap set by 02735LS.4" below the surface.



NAD 83/91
OREGON STATE PLANE NORTH
INTERNATIONAL FEET

N764422.75
E8548566.62

LAT - 45° 45' 19.44857" N
LON - 119° 08' 33.23143" W

Monument (s) Set (Procedures and Description)

None.

References Set: "Deep One" magnets by Berntsen.

- An Orange magnet, 24" deep, lies N43°00'W, 22.06'.
- A 5/8"X30" Iron rebar w/rpc #43406 lies N9°00'W, 103.32' by well casing.
- A Pind magnet, 18" deep, lies S53°40'E, 24.13'.
- A Blue magnet, 18" deep, lies S40°30'W, 16.54'.

Location and Comments

The corner is approx. 1/4 mile North of I-84, in the W edge of a farm field road. Access is from the first exit to Echo going W bound from Pendleton. There is a farm road parallel to I-84.

Compass Declination

17° E

Surveyors Seal

REGISTERED
PROFESSIONAL
LAND SURVEYOR

Robert D. English
OREGON
JANUARY 11, 2005
ROBERT DOUGLAS ENGLISH
43406LS

RECEIVED BY:

Date: 8-10
Rec'd By: KK
No. 10-139-R

Firm / Agency

Survey One, LLC.
P.O. Box 382
Pendleton, OR 97801
(541) 276-2055

RENEWAL DATE: 12/31/11