

OREGON CORNER RESTORATION FORM

Section 11/12 Township 3N Range 29E

County UMATILLA Date 9-7-01 9-21

CORNER DESIGNATION

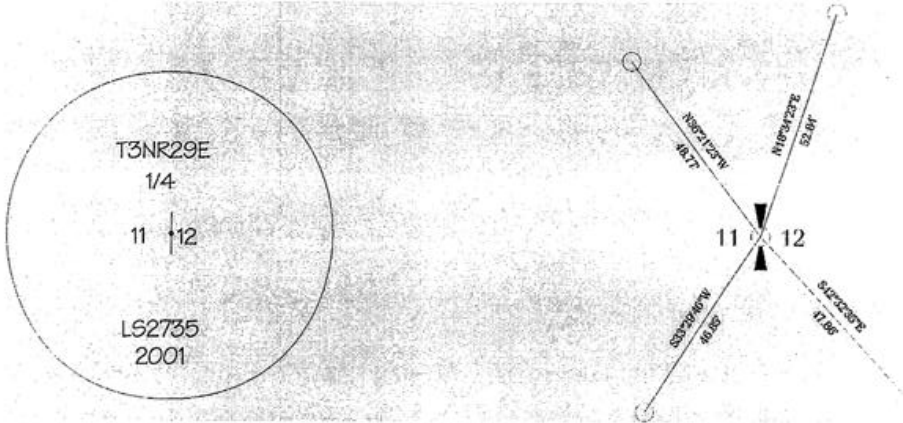
- Condition Report Only
- Not Found
- Renewed
- Unrecorded
- Surveyed In
- Referenced Out

Previous Renewals/Surveys, etc. A POST IN A MOUND OF EARTH WAS
ORIGINALLY SET BY N. H. GATES UNDER CONTRACT NO. 84 IN JULY, 1859.

Monuments(s) & Accessories Found: (Condition and Source)
NO EVIDENCE OF THE ORIGINAL CORNER WAS FOUND.

Monument Detail

Sketch



Monument Set (Procedures and Description)
A 1-1/4" BRASS CAP ON A FLARED 2'X1" STEEL PIPE WAS SET.
THE CORNER WAS SET BY SINGLE PROPORTIONATE MEASURE
FROM CALCULATED CORNERS AT THE NORTHEAST AND SOUTH-
EAST SECTION CORNERS. SEE RECORD OF SURVEY MAP FOR
HALE FARMS FILED SEPARATELY FOR DETAILS OF FOUND AND HELD
MONUMENTS.

New Accessories

5/8" REBAR AND YELLOW PLASTIC CAP	N36°21'23"W	48.77'
5/8" REBAR AND YELLOW PLASTIC CAP	N18°34'23"E	52.84'
5/8" REBAR AND YELLOW PLASTIC CAP	S42°32'35"E	47.86'
5/8" REBAR AND YELLOW PLASTIC CAP	S33°29'46"W	46.85'

Location & Comments

NAD83/91

OREGON NORTH

INT. FEET

N 764417.45

E 8548571.71

Compass Declination

Firm/Agency ROGERS

SURVEYING INC.

Address 803 COLUMBIA

PARK TR. RICHLAND WA

Party Chief E. PIERCE

Notes

Witness D. BAALMAN

Surveyor's Seal

REGISTERED PROFESSIONAL LAND SURVEYOR

John A. Baalman

OREGON
 JANUARY 18, 1906
 JOHN A. BAALMAN
 02735LS

9-17-01

01-146-B