

# CORNER PERPETUATION AND FILING RECORD

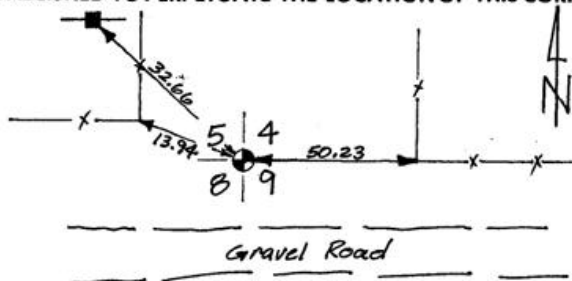
RECORD OF ORIGINAL CORNER: \_\_\_\_\_ Date of Survey \_\_\_\_\_ Surveyor \_\_\_\_\_ E-9

**DESCRIPTION OF CORNER EVIDENCE FOUND:**

Found Brass CAP 2.5' below surface Marking  
 Section Corner  $\frac{5}{8} | \frac{4}{9}$  T. 3N., R. 28E., B.M.

**DESCRIPTION OF MONUMENT AND ACCESSORIES ESTABLISHED TO PERPETUATE THE LOCATION OF THIS CORNER.**

13.94 N.W. to PK NAIL in  
 Fence corner Post  
 32.66 N.W. to PK Nail in  
 Power Pole.  
 50.23 East to PK Nail in  
 Fence Corner Post.



Date of work 11-21-1990 Mag. Decl. \_\_\_\_\_

**SURVEYOR'S CERTIFICATE**

The fieldwork was performed and corner record prepared by me or under my direction in conformance with the Corner Perpetuation Act.

Name JOHN T. EDDY  
 R.L.S. No. 1850  
 Employer J-V-B ENGINEERS INC.  
BOISE, IDAHO

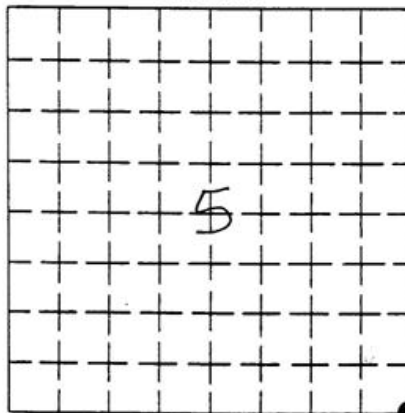
Seal, Signature, Date:

Marks on Monument Set:



For County Use Only

**DIAGRAM**



COUNTY UMATILLA  
 SECTION 5  
 (Refer to diagram)  
 TOWNSHIP 3 NORTH  
 RANGE 28 EAST

RECEIVED BY  
 Umatilla County Surveyor  
 Date 10-91  
 Rec'd By KK  
 No. 91-68-B