

CORNER PERPETUATION AND FILING RECORD

E-8

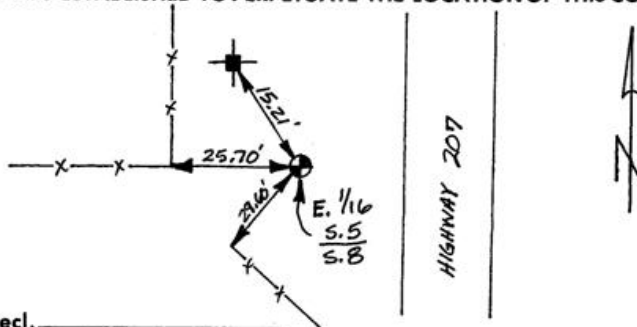
RECORD OF ORIGINAL CORNER: Date of Survey _____ Surveyor _____

DESCRIPTION OF CORNER EVIDENCE FOUND:

Found Brass Cap Marking E $\frac{1}{16}$ Corner $\frac{S.5}{S.8}$
 T. 3N., R. 28E., W. M.

DESCRIPTION OF MONUMENT AND ACCESSORIES ESTABLISHED TO PERPETUATE THE LOCATION OF THIS CORNER.

25.70' West to PK Nail in
 Fence Corner Post.
 15.21' N.W. to PK Nail in
 Power Pole.
 29.60' S.W. to PK Nail in
 Gate Post.



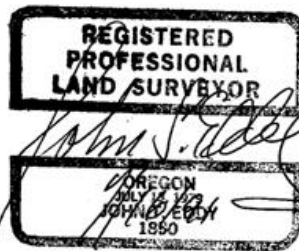
Date of work 11-21-1990 Mag. Decl. _____

SURVEYOR'S CERTIFICATE

The fieldwork was performed and corner record prepared by me or under my direction in conformance with the Corner Perpetuation Act.

Name JOHN T. EDDY
 R.L.S. No. 1850
 Employer J-U-B ENGINEERS INC.
BOISE, IDAHO

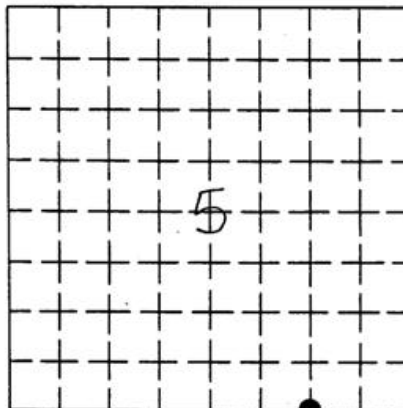
Seal, Signature, Date:



Marks on Monument Set:

For County Use Only

DIAGRAM



COUNTY UMATILLA
 SECTION 5
 (Refer to diagram)

TOWNSHIP 3 NORTH
 RANGE 28 EAST

CROSS INDEX

RECEIVED BY
 Umatilla County Surveyor
 Date 10-91
 Rec'd By KK
 No. 91-68-B