

OREGON CORNER RESTORATION FORM

Section 6,7

Township 3N

Range 29E

County Umatilla

Date: 01/10/09

Corner Designation: 3N29E3

1/4 Corner common to sections 6 and 7, T3NR29E

- _____ Condition Report Only
- _____ Not Found
- _____ Remonumented
- _____ Unrecorded
- _____ Surveyed In
- _____ X _____ Referenced Out

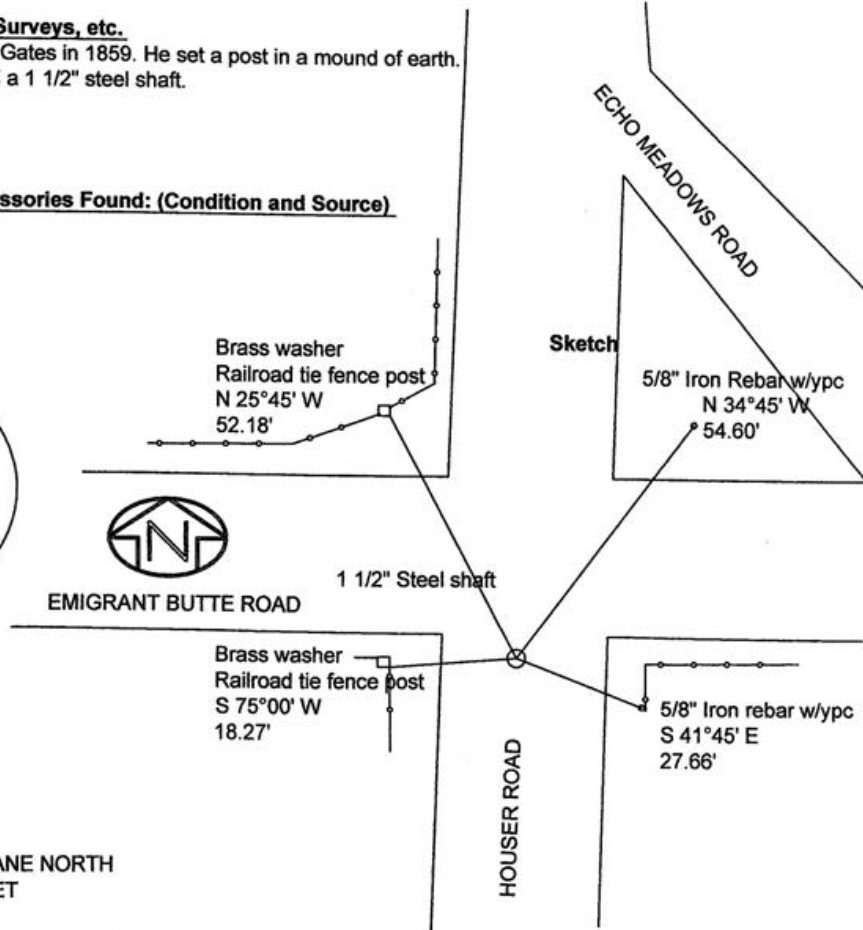
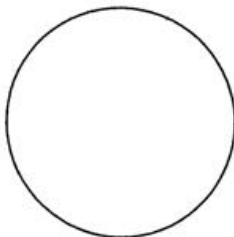
Previous Renewals / Surveys, etc.

Originally Surveyed by Gates in 1859. He set a post in a mound of earth. In 2001 Haddock found a 1 1/2" steel shaft.

Monuments and Accessories Found: (Condition and Source)

A 1 1/2" steel shaft.

Diagram



NAD 83/91
OREGON STATE PLANE NORTH
INTERNATIONAL FEET

766546.326
8524684.489
LAT - 45° 45' 44.2416" N LON - 119° 14.09559" W

Monument (s) Set (Procedures and Description)

None.

References Set:

- A brass washer #43406 and nail on a railroad tie fence post lies N 25°45' W, 52.18'.
- A 5/8" x 30" Iron rebar w/ypc lies N 34°45' E, 54.60'.
- A 5/8" x 30" Iron rebar w/ypc lies S 41°45' E, 27.66'.
- A brass washer #43406 and nail on a railroad tie fence post lies S 75°00' W, 18.27'.

Location and Comments

From the intersection of Echo Meadows Rd. and Umatilla Meadows Rd. go South 1 mile to the corner.

Compass Declination

17° E

Surveyors Seal

REGISTERED
PROFESSIONAL
LAND SURVEYOR

Robert D. English
OREGON
JANUARY 11, 2005
ROBERT DOUGLAS ENGLISH
43406LS

RECEIVED BY:

Date: 1-09
Rec'd By: [Signature]
No. 09-23-P

Firm / Agency

Survey One, LLC.
P.O. Box 382
Pendleton, OR 97801
(541) 276-2055

RENEWAL DATE: 12/31/09