

OREGON CORNER RESTORATION FORM

SECTION 31,32,5,6 TOWNSHIP 4 & 3 NORTH RANGE 29 EAST Z-5
 COUNTY : UMATILLA DATE 01/02

CORNER DESIGNATION

SECTION CORNER

- CONDITION REPORT ONLY
- NOT FOUND
- RENEWED
- UNCOVERED
- SURVEYED IN
- REFERENCED

PREVIOUS RENEWALS / SURVEYS, ETC.

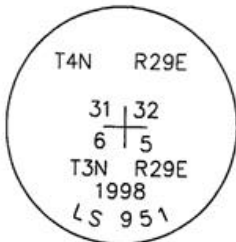
ORIGINALLY SURVEYED IN 1859 BY GATES UNDER CONTRACT #84. HE SET A POST IN A MOUND OF EARTH.
 IN 1972 HARRIS FOUND IRON PIPE.
 IN 1988 EDWARDS SET A 1" x 30" IRON PIPE WITH A 2 3/8" BRASS CAP IN PLACE OF 1 1/2" IRON PIPE.

MONUMENTS AND ACCESSORIES FOUND: CONDITION AND SOURCE

AN ALUMINUM TAG #951 ON A R x R TIE FENCE CORNER LIES S 62°37'54" W, 0.79 FEET.
 AN ALUMINUM TAG #951 ON A R x R TIE FENCE CORNER LIES N 88°13'14" E, 8.55 FEET.
 A 1" x 30" IRON PIPE WITH A 2 3/8" BRASS CAP LIES S 89°56'55" W, 427.66 FEET.
 A 5/8" x 30" REBAR WITH A 2" ALUMINUM CAP LIES N 03°08'15" W, 50.53 FEET.

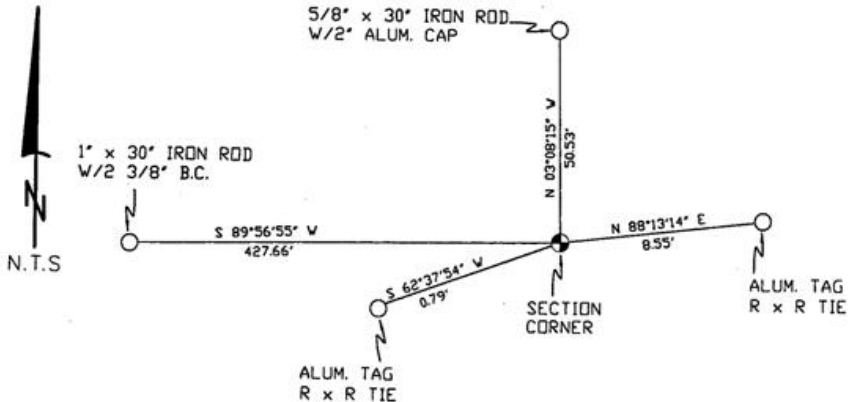
MONUMENT DETAIL

SKETCH



NAD 83/91
 OREGON STATE PLANE
 INTERNATIONAL FEET

771908.4156
 8527253.0580



MONUMENT SET (PROCEDURES AND DESCRIPTION)

NEW ACCESSORIES FROM WHICH

LOCATION AND COMMENTS

FROM COE ST. IN STANFIELD
 GO WEST ACROSS UMATILLA
 RIVER, GO 0.15 MILES TO
 ANG. PT IN ECHO MEADOWS RD
 COR LIES 450' EAST OF FENCE
 CORNER.

COMPASS DEC.

FIRM/AGENCY

PRIMM LAND SURVEYING
 P.O. BOX 1322
 HERMISTON, OREGON 97838

PARTY CHIEF

KEITH P. PRIMM

NOTES

WITNESS

BRIT L. PRIMM

RECEIVED BY

Umatilla County Surveyor

Date 2-02

Rec'd By KK

No. 02-49-9

SURVEYOR'S SEAL

REGISTERED
 PROFESSIONAL
 LAND SURVEYOR

Brit L. Primm
 OREGON
 JULY 13, 1999
 BRIT L. PRIMM
 48509

EXPIRATION DATE: 12/31/02