

**OREGON CORNER RESTORATION FORM**

Section 1 Township 3N  
County Umatilla Date: 12/31/08

Range 29E

Corner Designation: 3N29A25

Section corner common to sections 36, T4NR29E, 1, T3NR29E, 31, T4NR30E, 6, T3NR30E.

- Condition Report Only
- Not Found
- Remonumented
- Unrecorded
- Surveyed In
- Referenced Out

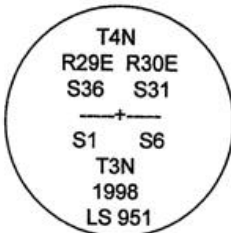
**Previous Renewals / Surveys, etc.**

Originally Surveyed by Gates in 1859. He set a post in a mound of earth.  
In 1998 Edwards set a 1"x30" Iron pipe with a 2 3/8" B.C. by single proportion.  
In 2001 Primm found a 2 3/8" B.C.  
In 2002 Haddock found a 2 1/2" B.C.

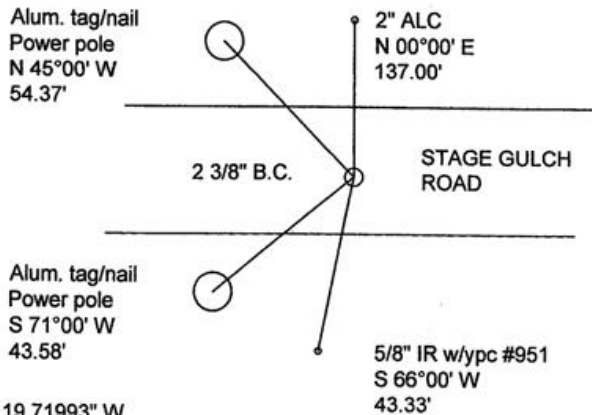
**Monuments and Accessories Found: (Condition and Source)**

A 2 3/8" B.C.  
An aluminum tag #951 and nail on a power pole lies N 45°00' W, 54.37'.  
A 2" ALC #951 lies N 00°00' E, 137.00'  
A 5/8" IR w/ypc #951 lies S 66°00' W, 43.33'.  
An aluminum tag #952 and nail on a power pole lies S 71°00' W, 43.58'.

Diagram



Sketch



NAD 83/91  
OREGON STATE PLANE NORTH  
INTERNATIONAL FEET

772531.588  
8553641.695

LAT - 45° 46' 38.65117" N LON - 119° 07' 19.71993" W

**Monument (s) Set (Procedures and Description)**

None.

**References Set:**

**Location and Comments**

The corner lies 3.5 miles east from the intersection of S. Ash Rd. and Stage Gulch Rd. in Stanfield.

**Compass Declination**

17° E

**Surveyors Seal**

REGISTERED  
PROFESSIONAL  
LAND SURVEYOR

*Robert D. English*  
OREGON  
JANUARY 11, 2005  
ROBERT DOUGLAS ENGLISH  
43406LS

RECEIVED BY:

Firm / Agency

Date: 1-07  
Rec'd By: SK  
No. 09-22-2

Survey One, LLC.  
P.O. Box 382  
Pendleton, OR 97801  
(541) 276-2055

RENEWAL DATE: 12/31/09

*09-146R*