

OREGON CORNER RESTORATION FORM

Section 3,4 Township 3N
County Umatilla Date: 12/31/08

Range 29E

Corner Designation: 3N29A17

Section corner common to sections 34,35, T4NR29E, 3,2, T3NR29E.

- Condition Report Only
- Not Found
- Remonumented
- Unrecorded
- Surveyed In
- Referenced Out

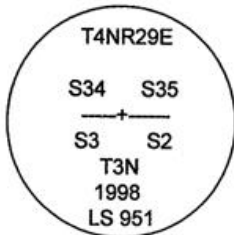
Previous Renewals / Surveys, etc.

Originally Surveyed by Gates in 1859. He set a post in a mound of earth.
In 1998 Edwards set a 1"x30" Iron pipe with a 2 3/8" B.C. by single proportion.
In 2001 Primm found a 2 3/8" B.C.
In 2002 Haddock found a 2 1/2" B.C.

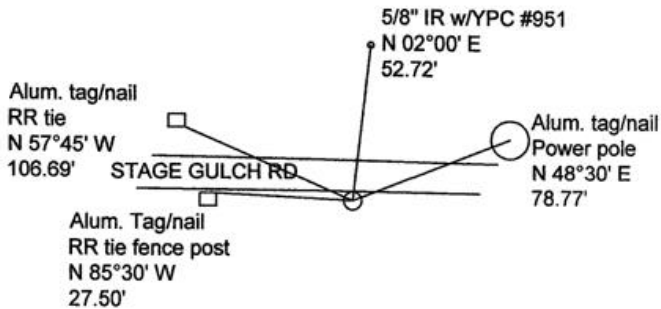
Monuments and Accessories Found: (Condition and Source)

A 2 3/8" B.C.
An aluminum tag #951 and nail on a railroad tie fence post lies N 57°45' W, 106.69'.
A 5/8" Iron rebar w/ ypc #951 lies N 02°00' E, 52.72'.
An aluminum tag #951 and nail on a power pole lies N 48°30' E, 78.77'.
An aluminum tag #951 and nail on a railroad tie fence post lies N 85°30' W, 27.50'.

Diagram



Sketch



NAD 83/91
OREGON STATE PLANE NORTH
INTERNATIONAL FEET

772299.419
8543043.169

LAT - 45° 46' 38.11689" N LON - 119° 09' 49.29229" W

Monument (s) Set (Procedures and Description)

None.

References Set:

Location and Comments

The corner lies on the Southerly edge of Old Stage Gulch Rd. and approx. 30' East of a Southerly dirt rd.

Compass Declination

17° E

Surveyors Seal

REGISTERED
PROFESSIONAL
LAND SURVEYOR

Robert D. English
OREGON
JANUARY 11, 2005
ROBERT DOUGLAS ENGLISH
43406LS

RECEIVED BY:

Date: 01-09
Rec'd By: KK
No. 09-18-2

Firm / Agency

Survey One, LLC.
P.O. Box 382
Pendleton, OR 97801
(541) 276-2055

RENEWAL DATE: 12/31/09