

OREGON CORNER RESTORATION FORM

T2N R28E A1

Section 6, Township 2N, Range 27E,
County Umatilla, Date November 15, 2004.

- Condition Report
- Not Found
- Remonumented
- Unrecorded
- Surveyed in
- Referenced out

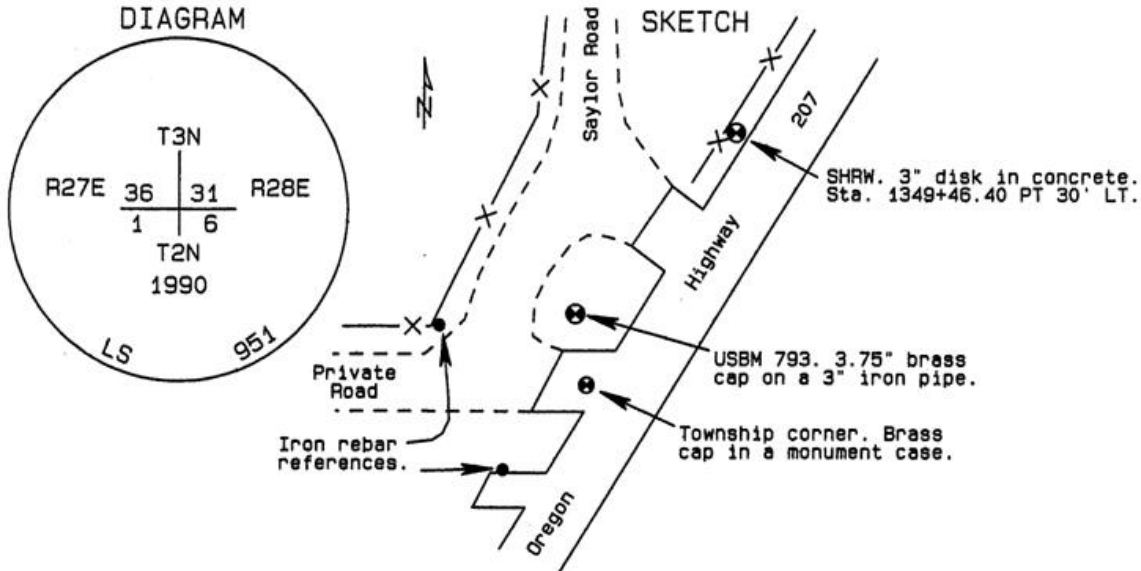
Township corner common to Townships 2 and 3 North
Ranges 27 and 28 East, W.M., Umatilla County, Oregon.

Previous Renewals / Surveys, etc.

The corner was originally set by David P. Thompson under Contract No. 83 dated July 22, 1859. His record Reads: Set post for corner to Townships 2 and 3 North of Ranges 27 and 28 East, in mound of earth &c as per instructions. Otis Gould, under Contract No. 217 dated March 12, 1938, accepted the intersection of roads accepted by the settlers for many years. His record reads: At point for cor. deposit a basalt stone, 16x14x12 ins., marked x, 26 ins. in ground. At a point 70 lks. S.45°W., of true cor. point, set an iron post, 3 ft. long, 3 ins. diam., 27 ins. in the ground, with broken glass deposited at the base, for witness cor. with brass cap. In July of 1990, G. Dennis Edwards set a 2 3/8" brass cap on a 1" I.D. x 30" iron pipe for this corner under survey 90-53-A.

Monument and accessories found: (Condition and source)

I found the brass cap set by Edwards in a monument box in the edge of Oregon Highway 207 in the paved approach for a private road to the west. I also found the References by Edwards in good condition.



Monument and accessories set: (Procedures and description)

For references I set two 5/8" x 24" iron rebars with 1.25" orange plastic caps stamped WTS and 56295LS flush with the surface of the ground:
 an iron rebar bears N78°40'58"W 129.22 feet;
 an iron rebar bears S40°42'39"W 59.20 feet;
 I found a 3" brass disk in concrete N19°26'05"E 210.17 feet;
 the 4" brass capped USBM bears N38°17'55"W 53.16 feet stamped USBM 793;
 The monument and references were tied with a Trimble R7/R8 system using static surveying procedures. Bearings are Grid.

Location and Comments
 SPC Oregon North, NAD 83-91
 Northing = 739,738.78 ift
 Easting = 8,490,187.50 ift

Compass Declination

Surveyor's Seal

Witnessed By:
 RECEIVED BY:
Umatilla County Surveyor
 Date: 5-05
 Rec'd By: KK
 No. 05-111-C

Firm / Agency
 Witness Tree Surveying
 P.O. Box G
 Pilot Rock, OR 97868
 Party Chief
 Stephen K. Haddock, PLS

REGISTERED
 PROFESSIONAL
 LAND SURVEYOR

Stephen K. Haddock

OREGON
 JULY 9, 2001
 STEPHEN K. HADDOCK
 56295LS

RENEWAL DATE 6-30-05