

# OREGON CORNER RESTORATION FORM

Section 25 Township 3N Range 28E  
 County Umatilla Date: 06-20-02

Corner Designation: 3N28R25

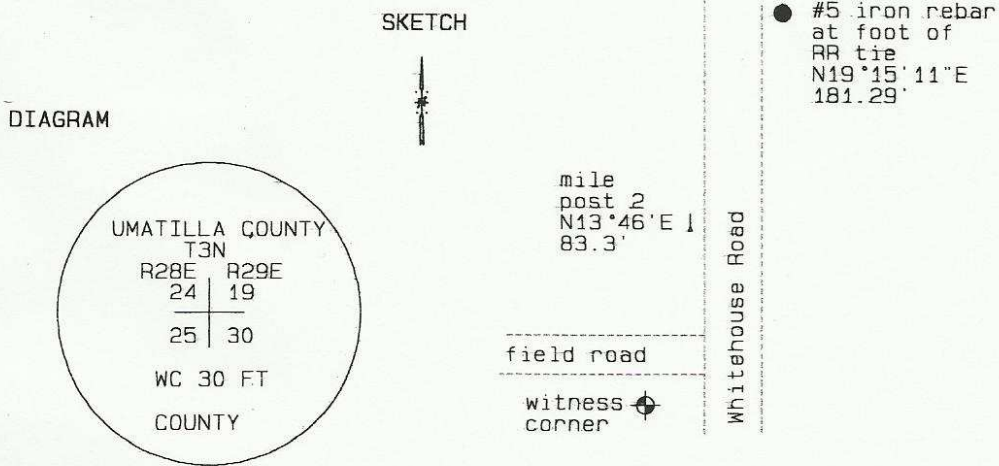
_____x_____	Condition Report Only
_____	Not Found
_____	Re monumented
_____	Unrecorded
_____	Surveyed In
_____	Referenced Out

Previous Renewals / Surveys, etc.

Survey H-107-B records setting a brass capped monument here.  
 Survey 99-113-B records finding a brass cap monument here.

**Monument and Accessories Found: ( condition and source )**

Found a brass capped witness monument stamped as shown in the diagram below. I was unable to find a monument at the location indicated by the witness monument.



**MONUMENT (S) AND ACCESSORIES SET (Procedures and Description)**

None.

**REFERENCES SET:**

None.

Made GPS tie to TRI Station Stanfield East Base.	Oregon State Plane Coord. - North Zone
Latitude 45°43'06.31366" N	Northing 750502.22
Longitude 119°14'54.86066" W	Easting 8521721.07
NAD 83 (1991)	Ortho Height 725.55
Coordinates are for witness corner.	Ellipsoidal Height 656.13

Location and Comments	Compass Declination	Surveyors Seal
	20°E	

From the junction of Highway 320 and Whitehouse Road, go south 0.5 mile. The corner is located in a mound of earth west of Whitehouse Road and south of a field road going west.

REGISTERED  
PROFESSIONAL  
LAND SURVEYOR

RECEIVED BY:

Firm / Agency

*David L. Haddock*

Date: 7-02  
 Rec'd By: PK  
 No. 22-187-0

Haddock Surveying  
 P. O. Box 1574  
 Pendleton, OR 97801  
 (541) 276-2174

OREGON  
 JULY 12, 1968  
 DAVID L. HADDOCK  
 852