

OREGON CORNER RESTORATION FORM

Section 7
County Umatilla

Township 3N
Date: 08/18/09

Range 29E

Corner Designation: 3N29J1

Corner common to section 12,13, T3NR28E, and section 7,18, T3NR29E.

- Condition Report Only
- Not Found
- Remonumented
- Unrecorded
- Surveyed In
- Referenced Out

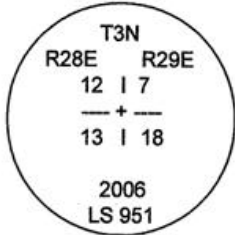
Previous Renewals / Surveys, etc.

Originally Surveyed by N.H. Gates in 1859. He set a post in a mound of earth.
Partition Plat 2006-13 Edwards set 1" x 30" Iron Pipe with 2 3/8" Brass Cap.

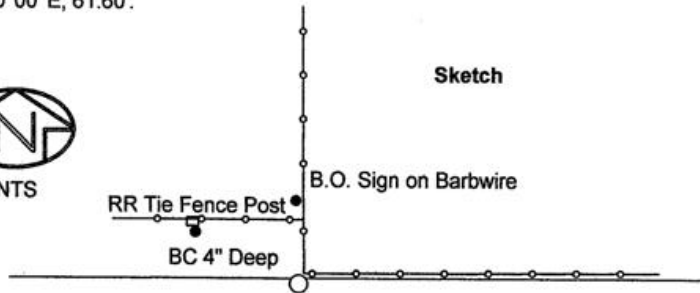
Monuments and Accessories Found: (Condition and Source)

- A 2.5" B.C.
- A 5/8" Iron rebar w/ypc #951 lies N, 19.99'.
- A 5/8" Iron rebar w/ypc #951 lies S 61°00' W, 49.66'.
- A 5/8" Iron rebar w/ypc #951 lies S 40°00' E, 61.60'.

Diagram



Sketch

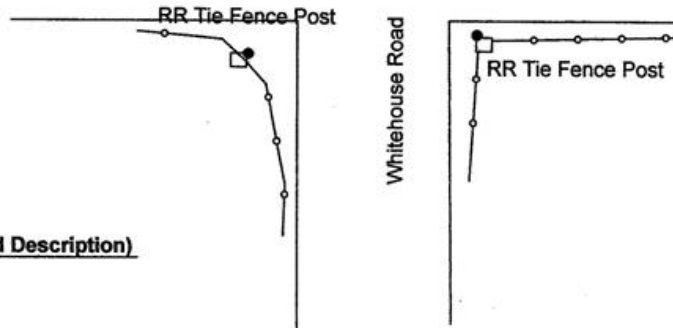


NAD 83/91
OREGON STATE PLANE NORTH
INTERNATIONAL FEET

N761157.655
E8521564.81

LAT - 45° 44' 51.52573" N
LON - 119° 14' 54.73661" W

Monument (s) Set (Procedures and Description)
None.



References Set:

A 5/8" x 30" Iron rebar w/ypc #43406 lies N 56°00' W, 29.26'.

Location and Comments

The corner is 1.6 miles North of the intersection of Hwy. 320 and Whitehouse Rd.

Compass Declination
17° E

Surveyors Seal

REGISTERED
PROFESSIONAL
LAND SURVEYOR

Robert D. English
OREGON
JANUARY 11, 2005
ROBERT DOUGLAS ENGLISH
43406LS

RECEIVED BY:

Date: 1-11
Rec'd By: RR
No. 11-13-R

Firm / Agency

Survey One, LLC.
P.O. Box 382
Pendleton, OR 97801
(541) 276-2055

RENEWAL DATE: 12/31/09