

OREGON CORNER RESTORATION FORM

Section 4 Township 3N Range 28E
 County Umatilla Date 07-20-02
 Corner Designation: 3N28E9

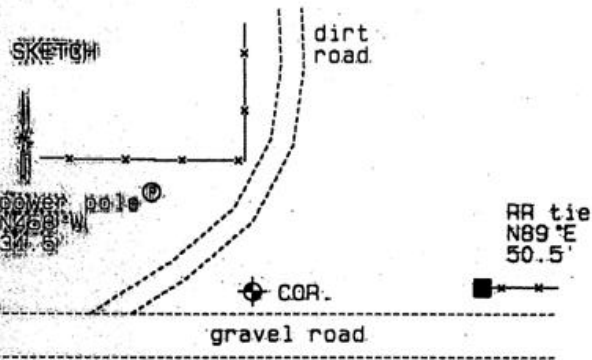
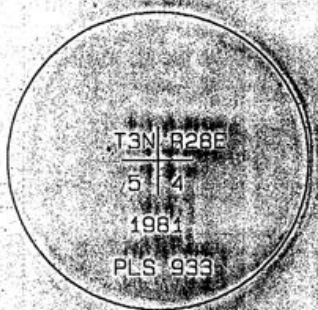
Condition Report Only
 Not Found
 Remonumented
 Unrecorded
 Surveyed In
 Referenced Out

Previous Renewals / Surveys, etc.
 Survey 0-503-B records finding a stone here. Survey S-14-B records setting a brass capped monument here. Survey 98-02-B records finding a brass capped monument here.

Monument and Accessories Found: (condition and source)

Found a brass capped monument 2' below the surface as described below

DIAGRAM



MONUMENT (S) AND ACCESSORIES SET (Procedures and Description)

None.

REFERENCES SET:

None.

Made GPS tie to TRI Station
 Stanfield East Base
 Latitude: 45° 45' 45.64670" N
 Longitude: 119° 19' 54.60235" W
 NAD 83 (1991)

Oregon State Plane Coord. - North Zone
 Northing: 766309.71
 Easting: 8500223.97
 Ortho Height: 652.59
 Ellipsoidal Height: 582.59

Location and Comments

Compass Declination
 20° E

Surveyors Seal

From the junction of TB4 and Highway 207, go south 1.6 mile. Take a road eastward along a chain link fence. The corner is buried beneath the road in a junction where the chain link fence turns north.

REGISTERED
 PROFESSIONAL
 LAND SURVEYOR

RECEIVED BY:

Firm / Agency

David L. Haddock

Date: 12-02
 Rec'd By: KE
 No.: 02-293-91

Haddock Surveying
 P. O. Box 1574
 Pendleton, OR 97801
 (541) 276-2174

OREGON
 JULY 12, 1968
 DAVID L. HADDOCK
 852