

# OREGON CORNER RESTORATION FORM

Section 6 Township 3N Range 29E  
 County Umatilla Date: 05-09-02

Corner Designation: 3N29A1

Condition Report Only  
 Not Found  
 Remonumented  
 Unrecorded  
 Surveyed In  
 Referenced Out

**Previous Renewals / Surveys, etc.**

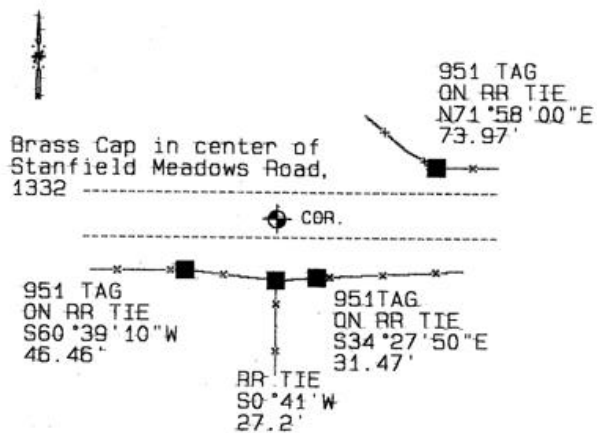
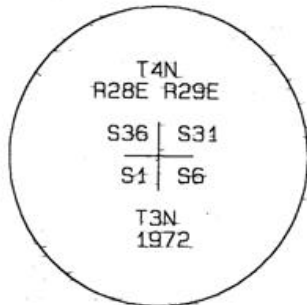
Surveys S-156-C, 88-57-B, 88-89-B and 95-60-B record a brass capped monument found at this location.

**Monument and Accessories Found: ( condition and source )**

Found the record monument above.

**SKETCH**

**DIAGRAM**



**MONUMENT (S) AND ACCESSORIES SET (Procedures and Description)**

None.

**REFERENCES SET:**

None.

|                                   |  |
|-----------------------------------|--|
| Made GPS tie to TRI Station Echo. | Oregon State Plane Coord. - North Zone |
| Latitude 45°46'36.72627"N         | Northing 771812.03                     |
| Longitude 119°14'54.61395"W       | Easting 8521408.45                     |
| NAD 83(1991)                      | Ortho Height 580.54                    |
|                                   | Ellipsoidal Height 510.77              |

**Location and Comments**

**Compass Declination**  
20°E

**Surveyors Seal**

From Echo, go west at the stop sign, cross the river and go to the point where the road turns westward. From this point, the monument is located in the center of County Road 1322 approximately 0.9 miles west.

REGISTERED  
PROFESSIONAL  
LAND SURVEYOR

**RECEIVED BY:**

**Firm / Agency**

Date: 6-02  
 Rec'd By: AK  
 No. 02-169-9

Haddock Surveying  
 P. O. Box 1574  
 Pendleton, OR 97801  
 (541) 276-2174

*David L. Haddock*

OREGON  
JULY 12, 1988  
DAVID L. HADDOCK  
852

RENEWS 6-30-03