

OREGON CORNER RESTORATION FORM

SECTION 36 TOWNSHIP 4 NORTH RANGE 27 EAST
 COUNTY : UMATILLA DATE 12/02

Z-25

CORNER DESIGNATION

SE CORNER

X CONDITION REPORT ONLY

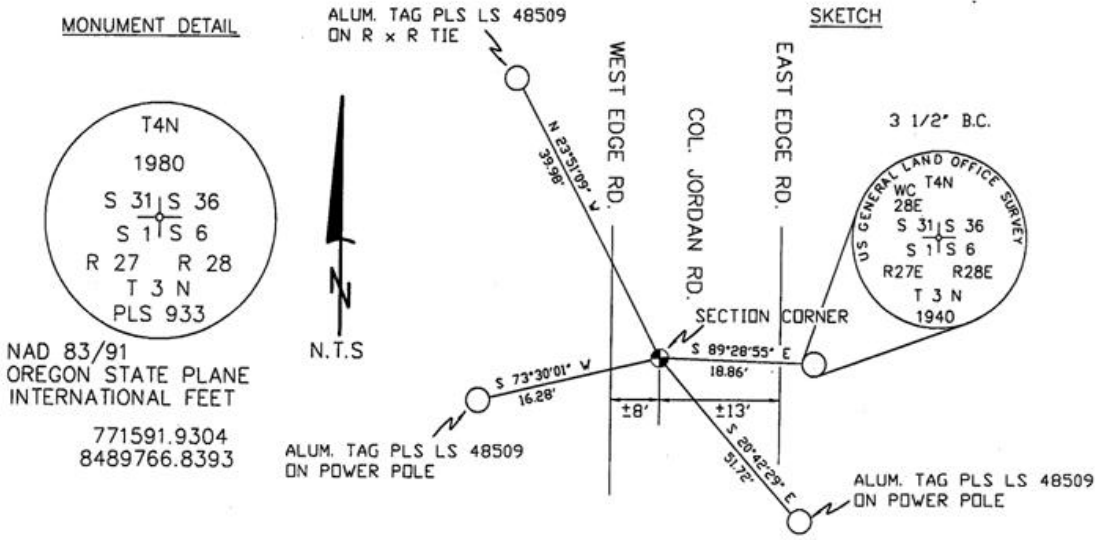
- NOT FOUND
- RENEWED
- UNCOVERED
- SURVEYED IN
- REFERENCED

PREVIOUS RENEWALS / SURVEYS, ETC.

ORIGINALLY SURVEYED UNDER CONTRACT #91 IN 1860 BY HAFT.
 GOULD 1940 DEPENDENT RE-SURVEY SET A 3 1/2" BRASS CAP.
 KRUMBEIN 1980 SET A 2 1/2" BRASS CAP.

MONUMENTS AND ACCESSORIES FOUND: CONDITION AND SOURCE

- A 2 1/2" BRASS CAP.
- A 3 1/2" BRASS CAP LIES S 89°28'55" E, 18.86 FEET.



MONUMENT SET (PROCEDURES AND DESCRIPTION)

NEW ACCESSORIES FROM WHICH

- AN ALUMINUM TAG "PLS LS 48509" ON A POWER POLE LIES S 20°42'29" E, 51.72 FEET.
- AN ALUMINUM TAG "PLS LS 48509" ON A POWER POLE LIES S 73°30'01" W, 16.28 FEET.
- AN ALUMINUM TAG "PLS LS 48509" ON A R x R TIE LIES N 23°51'09" W, 39.98 FEET.

LOCATION AND COMMENTS

FROM INTERSECTION OF NOBLE RD. WITH COL. JORDAN RD. GO SOUTH 0.5 MILE TO CORNER.

COMPASS DEC.

FIRM/AGENCY
 PRIMM LAND SURVEYING
 P.O. BOX 1322
 HERMISTON, OREGON 97838

PARTY CHIEF
 KEITH P. PRIMM

NOTES

WITNESS
 BRIT L. PRIMM

SURVEYOR'S SEAL

REGISTERED PROFESSIONAL LAND SURVEYOR

Brit L. Primm

OREGON
 JULY 13, 1999
 BRIT L. PRIMM
 48509

EXPIRATION DATE: 12/31/04

03-49-9