

# OREGON CORNER RESTORATION FORM

Section 14 Township 3N Range 27E  
 County Umatilla Date 06-28-08

Corner Designation: 3N27J24  
 Condition Report Only  
 Not Found  
 Remonumented  
 Unrecorded  
 Surveyed In  
 Referenced Out

Previous Renewals / Surveys, etc.

Corner set by GLO in 1940.  
 Survey 99-49-B reports finding this monument.

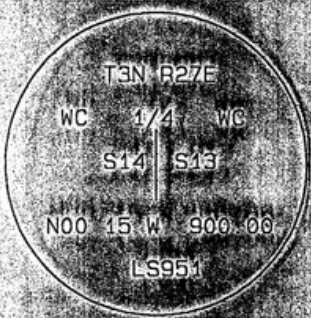
**Monument and Accessories Found: (Condition and source)**

Found the record monument in good condition. Computed the coordinates for the true corner based on ties to this witness corner and the north 1/16 corner also set by survey 99-49-B.

SKETCH



DIAGRAM



**MONUMENT (S) AND ACCESSORIES SET (Procedures and Description)**

None

**REFERENCES SET**

None

Made GPS tie to TRM Station	Oregon State Plane Coord. - North Zone
Stanfield East Base	Northing 760908.05
Latitude 45 44 54.36243 N	Easting 8484638.17
Longitude 119 23 35.47221 W	Ortho Height 705.64
NAD 83 (1991)	Ellipsoidal Height 635.82

Location and Comments: Compass Orientation 20°E Surveyors Seal

From the junction of 182 and Westland Road, follow Jordan Road south 1.4 mile. Enter the posted Madison Farm Road and continue south 0.7 mile. Then follow circle road south westerly 2.3 miles. Then follow a circle road southwesterly 0.3 miles.

REGISTERED  
PROFESSIONAL  
LAND SURVEYOR

RECEIVED BY:

Firm / Agency

*David L. Haddock*

Date: 12-02  
 Rec'd By: *KK*  
 No.: 02-282-9

Haddock Surveying  
 P.O. Box 1874  
 Pendleton, OR 97801  
 (541) 276-2174

OREGON  
JULY 12, 1968  
DAVID L. HADDOCK  
852

# OREGON CORNER RESTORATION FORM

Section 14 Township 3N Range 27E  
 County Umatilla Date 06-30-02

Corner Designation: 3N27E21

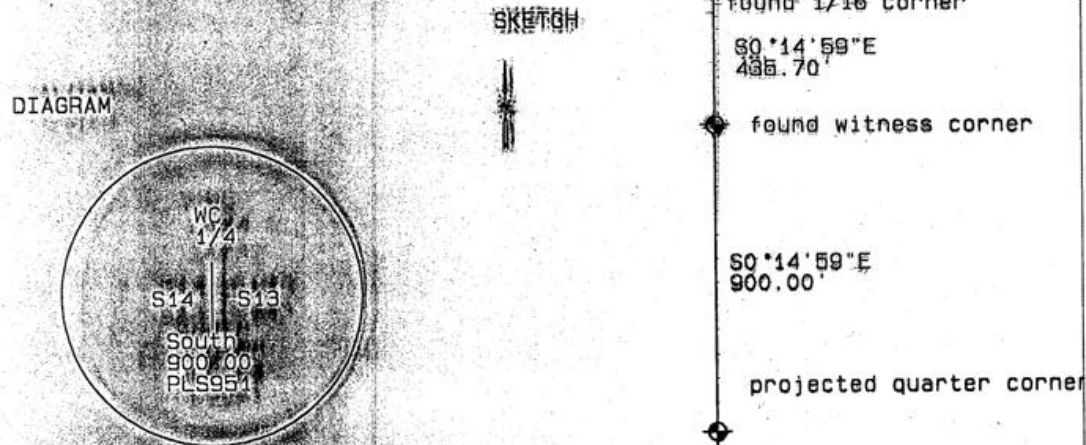
Condition Report Only  
 Not Found  
 Remonumented  
 Unrecorded  
 Surveyed In  
 Referenced Out

**Previous Renewals / Surveys, etc.**

Survey 90-49-B reported finding a 2 1/2" brass cap on a 1 3/4" pipe here as set by Gould in 1920. He set brass caps at the north 1/16 corner and a witness cap 900 feet southerly of the 1/16 corner.

**Monument and Accessories Found: (Origin and source)**

Found the north 1/16 and witness brass caps from survey 90-49-B. Used this information to compute the location of this corner.



**MONUMENT (S) AND ACCESSORIES SET (Procedures and Description)**

None.

**REFERENCES SET:**

None.  
 Made GPS tie to TPI Station  
 Stanfield East Base  
 Latitude 45° 41' 28.00660" N  
 Longitude 119° 23' 35.9229" W  
 NAD 83 (1994)

Oregon State Plane Coord. - North Zone  
 Northing 758237.12  
 Easting 8484685.49  
 Ortho Height  
 Ellipsoidal Height

**Location and Comments**

Compass Declination  
20° E

**Surveyors Seal**

From junction of 184 and Westland Road, follow Jordan Road south 1.4 mile. Enter the posted Madison Farm Road and go south westerly 2.7 mile. Then go southeast 0.4 miles to the witness corner.

REGISTERED  
 PROFESSIONAL  
 LAND SURVEYOR

*David L. Haddock*

**RECEIVED BY:**

**Firm / Agency**

Date: 12-02  
 Rec'd By: KK  
 No: 02-282-9

Haddock Surveying  
 P. O. Box 1874  
 Pendleton, OR 97801  
 (541) 278-2174

OREGON  
 JULY 12, 1968  
 DAVID L. HADDOCK  
 852

RENEWS 6-30-03