

OREGON CORNER RESTORATION FORM

Section 1 Township 3N Range 27E
 County Umatilla Date: 06-14-02

Corner Designation: 3N27A23

_____ x _____ _____ _____ _____ x _____ _____	Condition Report Only Not Found Remonumented Unrecorded Surveyed In Referenced Out
-----------------------------------------------------------	---------------------------------------------------------------------------------------------------

Previous Renewals / Surveys, etc.

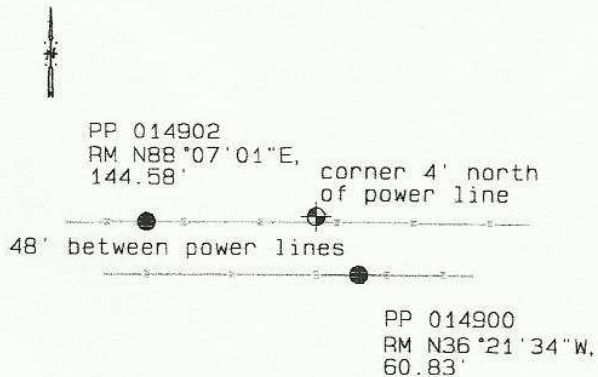
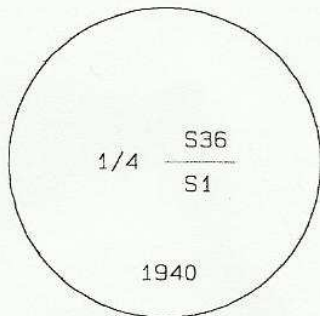
This corner was set by the GLO in 1940. Survey 97-176-B reports finding that brass capped monument.

Monument and Accessories Found: (condition and source)

Found the 2-1/2" brass cap on 1" iron pipe in an open field beneath power lines. Found two brass capped reference marks by PLS 2527.

SKETCH

DIAGRAM



MONUMENT (S) AND ACCESSORIES SET (Procedures and Description)

None.

REFERENCES SET:

None.

Made GPS tie to TRI Station Stanfield East Base.
 Latitude 45°46'39.13844"N
 Longitude 119°22'58.22891"W
 NAD 83(1991)

Oregon State Plane Coord. - North Zone
 Northing 771553.88
 Easting 8487132.31
 Ortho Height 583.87
 Ellipsoidal Height 514.01

Location and Comments	Compass Declination	Surveyors Seal
From Walker Road interchange on I84, go south on Col. Jordan Road about 1 mile to a substation on the west side of the road. From this point, follow the power line west 0.5 mile.	20°E	<div style="border: 1px solid black; padding: 5px; width: fit-content; margin: 0 auto;"> REGISTERED PROFESSIONAL LAND SURVEYOR </div>

RECEIVED BY:

Date: 7-02
 Rec'd By: KE
 No. 02-186-g

Firm / Agency

Haddock Surveying
 P. O. Box 1574
 Pendleton, OR 97801
 (541) 276-2174

David L. Haddock

OREGON
 JULY 12, 1968
 DAVID L. HADDOCK
 852

RENEWS 6-30-03