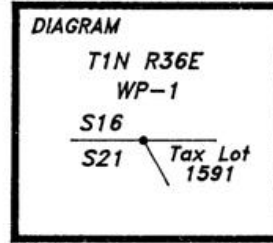


CERTIFIED RECORD OF LAND CORNER MONUMENTATION

History of original corner establishment:

NONE

N-11.26
346400
T. 1 N., R. 36 E.
Witness Point 1 of sections 16 & 21



Description of corner evidence found:

NONE

Description of monument and accessories established to perpetuate the original location of this corner:

Set a 2 1/2" diameter by 30" long aluminum pipe, with 3 1/4" diameter aluminum cap, 23" in the ground, with a White DEEP-1 magnetic reference set in the bottom of the hole, surrounded by a ring of stones, marked as shown, from which:

- 14" Douglas Fir bears N 77 1/2° E, 19.7 feet, scribed "WP1 S16" "BT".
- 17" Ponderosa Pine bears S 62 3/4° W, 19.6 feet, scribed "WP1 S21" "BT".

The new bearing trees are double blazed and have a 3/4" diameter brass washer stamped "RLS 2308" nailed to the lower blaze between the scribed "B T".



DATUM: NAD83(1991) Oregon High Accuracy Reference Network
 STATE PLANE COORDINATES: Oregon North Zone in International Feet
 No. Latitude Longitude Northing(Y) Easting(X)
 346400 45°33'30.99871" N. 118°19'00.76896" W. 697311.411' 8761209.063'

REGISTERED
PROFESSIONAL
LAND SURVEYOR

David A. Schlaich

OREGON
JULY 16, 1987
DAVID A. SCHLAICH
2308

RENEWAL DATE: 06/30/2004

Work Performed By: David A. Schlaich (RLS 2308)
 Witnessed By: Matthew Duffy
 Equipment: Topcon GPT-6005C Total Station
 Magnetic Declination: 17 1/2° East
 Date: September 10, 2002

Office of..... County of.....

State of....., I hereby certify that the within instrument was filed in this office for record on the..... day of....., 20.....

..... by..... (DEPUTY)
(COUNTY OFFICIAL)

Form R6-7100-57 (9/71)

SEE MAP OF SURVEY NO. 03-31-B