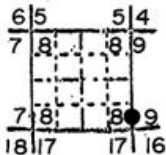


OREGON CORNER RESTORATION FORM

Section 8 Township 1N Range 35E

County Umatilla Date 1/7/88

Corner Designation



S-S1/64, 8|9

- Condition Report Only
- Not Found
- Renewed
- Unrecorded
- Surveyed In
- Referenced Out

Previous Renewals/Surveys, etc.

None

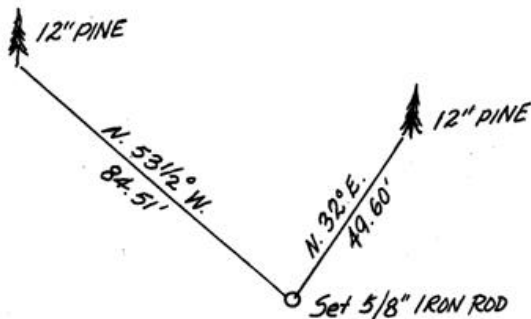
Monument(s) & Accessories Found: (Condition and Source)

None

Monument Detail



Sketch



Monument Set (Procedures and Description)

Set 5/8"x30" iron rod with yellow plastic cap marked "Oregon State Parks" 20" in ground with rock mound on top, set by single proportionment.

New Accessories

12" pine bears N32°E, 49.60' to 2 finish nails side and center marked "SS 1/64 S9 BT".

12" pine bears N53½°W, 84.51' to 2 finish nails side and center marked "SS 1/64 S8 BT".

Set orange Carsonite post with decal marked "Property Boundary - Oregon State Parks" 2' east.

Location & Comments

Drawing not to scale.  
References by hand  
compass and EDM.

Compass Declination 20°E

Firm/Agency Oregon State  
Parks & Recreation Div.

Address 525 Trade Street SE  
Salem OR 97310

Party Chief R.Hill  
Notes R.Hill

Witness L.Boge, H.Hanson

Seal

**REGISTERED  
PROFESSIONAL  
LAND SURVEYOR**

*John E. Hollingsworth*

OREGON  
JUL 9, 1988  
JOHN E. HOLLINGSWORTH  
691

RECEIVED BY

Umatilla County Surveyor

Date 6-88

Rec'd By KA

No. 88-57-B

