

**OREGON CORNER RESTORATION FORM**

Section 11 Township 1N Range 32E  
 County Umatilla Date: February 19, 2009

Corner Designation: 1N32J21

Corner common to sections 11, 12, 13, and 14,  
 T1N, R32E, W.M., Umatilla County, Oregon.

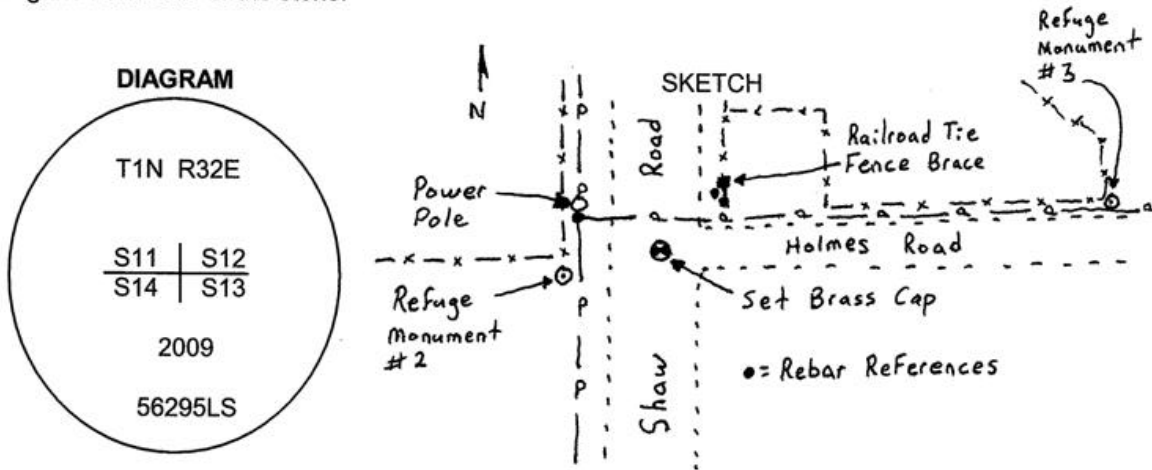
Condition Report Only  
 Not found  
 Remonumented  
 Unrecorded  
 Surveyed in  
 Referenced out

Previous Renewals / Surveys, etc.

Corner was originally set by Daniel Chaplin under contract No. 107 dated September 21, 1864. His record reads: Set post for corner to secs. 11, 12, 13 and 14 in mound of earth with charred stake, pits &c as per instructions. Zenas F. Moody under contract No. 164, dated October 4, 1871, stated: Set post. Currin and Noland under special contract dated May 4, 1887, stated: Set stone 7 x 8 x 9 ins. In record of survey H-255-B, set rock 12 x 7 x 5, with witness monument.

Monument and Accessories found: ( condition and source )

I found the 3" brass cap witness corner from the Refuge Survey H-255-B (Monument No. 2). At the corner point I found a basalt stone 13x8x5 ins. and a 1"x53" hexagonal drill steel driven along the north side of the stone.



**MONUMENT (S) AND ACCESSORIES SET (Procedures and Description)**

At the position of the corner stone, I set a 1 1/2" x 30" galvanized iron pipe with a 2 1/2" brass cap stamped as shown in the diagram above. The cap is 6" below the surface of the road. I buried the stone and drill steel along the east side of the new monument.

For references, I set two, 5/8" by 24" iron rebars with 1 1/4" orange plastic caps stamped WTS and 56295LS as described below:

- an iron rebar bears N37°50'25"W, 40.61 feet ;
- an iron rebar bears N20°31'26"E, 59.39 feet;
- a 1/2" iron rebar of unknown origin bears N64°51'33"W, 29.62 feet;
- a 3" brass cap (Refuge Monument No. 2) bears S89°32'03"W 30.00 feet;
- a 3" brass cap (Refuge Monument No. 3) bears N87°25'29"E 822.23 feet;

The monument and references were tied using a Trimble R7/R8 RTK GPS system.

Location and comments  
 NAD 83/1991 State Plane Coordinate  
 Oregon North Zone  
 N = 699,738.35 ift  
 E = 8,646,010.45 ift

Compass Declination

Surveyors Seal

RECEIVED BY:  
Umatilla County Surveyor  
 Date: 6-10  
 Rec'd By: KK  
 No. 10-63-C

Firm / Agency  
 Witness Tree Surveying  
 Address  
 P.O. Box G  
 Pilot Rock, Or. 97868  
 Party Chief  
 Stephen K, Haddock

REGISTERED  
 PROFESSIONAL  
 LAND SURVEYOR

*Stephen K. Haddock*

OREGON  
 JULY 9, 2001  
 STEPHEN K. HADDOCK  
 56295LS

RENEWAL DATE 6-30-11