

OREGON CORNER RESTORATION FORM

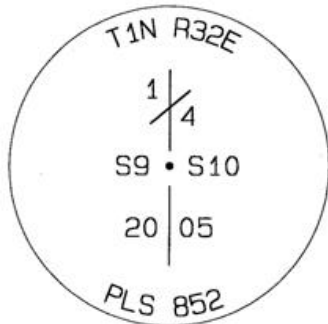
Section 10 Township 1N Range 32E
 County Umatilla Date: 06-22-2005

Corner Designation: 1N32EG13

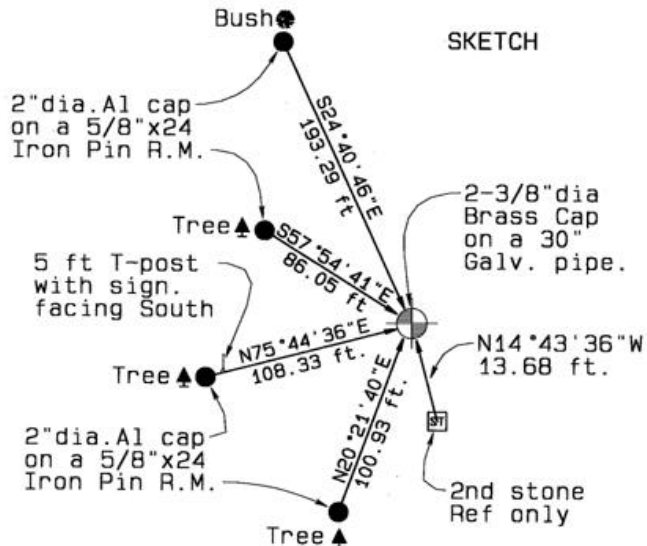
_____	Condition Report Only
_____	Not Found
_____x_____	Re-monumented
_____	Unrecorded
_____x_____	Surveyed In
_____x_____	Referenced Out

Previous Renewals / Surveys, etc.
 First surveyed in 01-11-1865 by D. Chaplin. Set post and 2 Bearing trees. A balm tree 14" dia at S70°E, 25 lks. dist and a Balm tree 14" dia. at S4°W, 115 lks. dist.
 Survey referenced location in 01-22-1900 by John Kimbrell. Set a stone 21"x 16"x 5". John Kimbrell resurveyed and referenced the corner in 10-19-1900, as a beginning point. Then in 10-29-1913 John Kimbrell resurveys the corner as a beginning point, and turning point
Monument and Accessories Found: (condition and source)
 Searched for and did not find the post and Balm tree BT's set by D. Chaplin in 1865. Found a stone 21.6"x 15.6"x 14.4", with 2 parallel chisel marks about 4" long each. Marks are just below the broken area on the stone. The marks appear to be the verticle lines in the number "4". Another stone was found without any marks, the dimensions were approximately 31"x 17"x 5". The 2nd stone was left in the creek approx 14 feet away, S15°E.

DIAGRAM



SKETCH



Monument and Accessories SET: (Procedure and Description)

Set a 2-3/8" dia Brass Cap on a 1" OD x 30" galvanized pipe flush with the surface of the ground. Built a rock crib around the mounment and placed the Stone of Record on the North Side below the surface. Set a 5' T-post 107 ft. at a brg S75°44'36"W with a Umatilla Survey sign attached facing South along the plowed field just inside the tree line.

REFERENCES SET

Set four reference monuments. Each are a 2" dia Alum. cap on a 5/8" dia. x 24" long steel iron pin and are flush with the surface of the ground. Recorded GPS measurements of each for location, bearing and distance. One Bearing object sign was placed on the tree near the Umatilla Survey Sign and the second RM 2" Al cap.

Single point GPS tie.	Oregon State Plane Coord. - North Zone
Latitude 45°35'14.9"N	Northing 702251.39'
Longitude 118°47'49.5"W	Easting 8635440.45'
NAD 83(1991)	Ellipsoidal Height 1170.50'

LOCATION AND COMMENTS:

Beginning at the intersection Coombs Canyon Road and Sparks Station Road, thence proceed approximately 1 mile to mile post 7 on the Union Pacific Rail road at 70021 Sparks Sta. Rd. Proceed East to the Birch Creek, thence North along the plowed field line to the Umatilla County sign on the East edge, then East to the corner brass cap located in the creek channel.

Surveyors Seal

REGISTERED
PROFESSIONAL
LAND SURVEYOR

David L. Haddock

OREGON
JULY 12, 1968
DAVID L. HADDOCK
852

RENEWS 6-30-07

RECEIVED BY:

Firm / Agency

Date: 7-05
 Rec'd By: KK
 No. 05-150-B

Haddock Surveying
 P. O. Box 1574
 Pendleton, OR 97801
 (541) 276-2174