

OREGON CORNER RESTORATION FORM

Section 6 Township 1N Range 32E
 County Umatilla Date: September 8, 2009

Corner Designation: 1N32E1

Corner to sections 1 and 12, T1N, R31E, and sections 6 and 7, T1N, R32E, W.M., Umatilla County, Oregon.

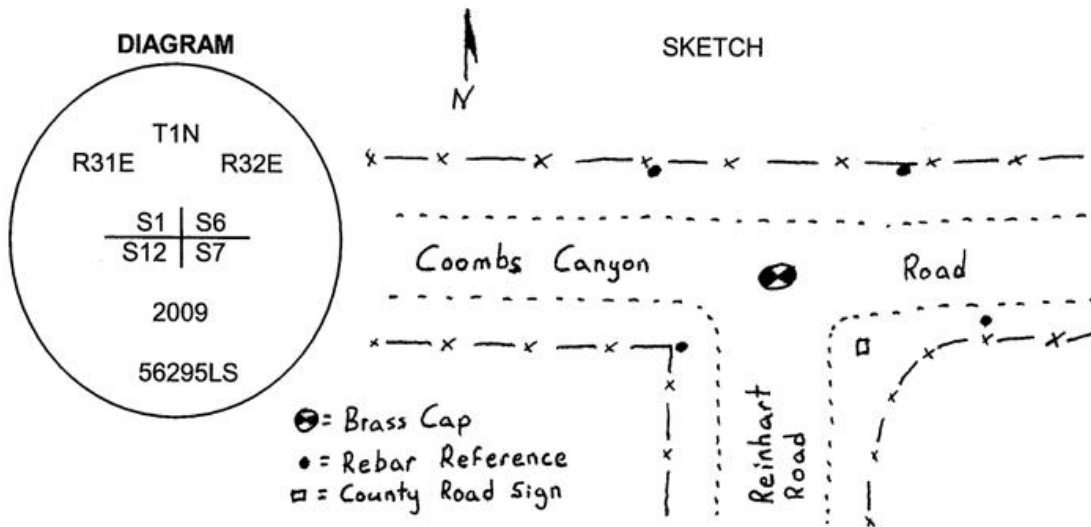
Condition Report Only
 Not found
 Remonumented
 Unrecorded
 Surveyed in
 Referenced out

Previous Renewals / Surveys, etc.

Corner originally set by Josiah A. Burnett under contract No. 92 dated September 12, 1860. His record reads: Set post cor. for secs. 6, 7, 1, and 12. Drove charred stake and raised mound with trench as per instructions. In the Record of Private Surveys Book 1, Page 471, L.E. Macomber says: Set stone 14x10x6 for Section Corner between 1 & 12 on Range Line.

Monument and accessories found. (condition and source)

None. The point falls at the intersection of roads running East, West and South.



MONUMENT (S) AND ACCESSORIES SET (Procedures and Description)

I set 1 1/2" x 30" galvanized iron pipe with a 2 1/2" brass cap stamped as shown in the diagram above at the intersection of the road centerlines. The cap is 7" below the surface of the road.

For references, I set four, 5/8" by 24" iron rebars with 1 1/4" orange plastic caps stamped WTS and 56295LS as described below:

- an iron rebar bears N44°19'29"W, 28.03 feet;
- an iron rebar bears N59°50'16"E, 44.02 feet;
- an iron rebar bears S65°18'45"E, 74.55 feet;
- an iron rebar bears S25°59'41"W, 44.42 feet;

The monument and references were tied using a Trimble R7/R8 RTK GPS in static mode.

Location and comments
 NAD 83/1991 State Plane Coordinate
 Oregon North Zone
 N = 704,623.67 ift
 E = 8,619,070.39 ift

Compass Declination
 Firm / Agency
 Witness Tree Surveying
 Address
 P.O. Box G
 Pilot Rock, Or. 97868
 Party Chief
 Stephen K, Haddock

Surveyors Seal

RECEIVED BY:
 Umatilla County Surveyor
 Date: 6-10
 Rec'd By: KE
 No. 10-93-C

REGISTERED
 PROFESSIONAL
 LAND SURVEYOR

Stephen K. Haddock

OREGON
 JULY 9, 2001
 STEPHEN K. HADDOCK
 56295LS

RENEWAL DATE 6-30-11