

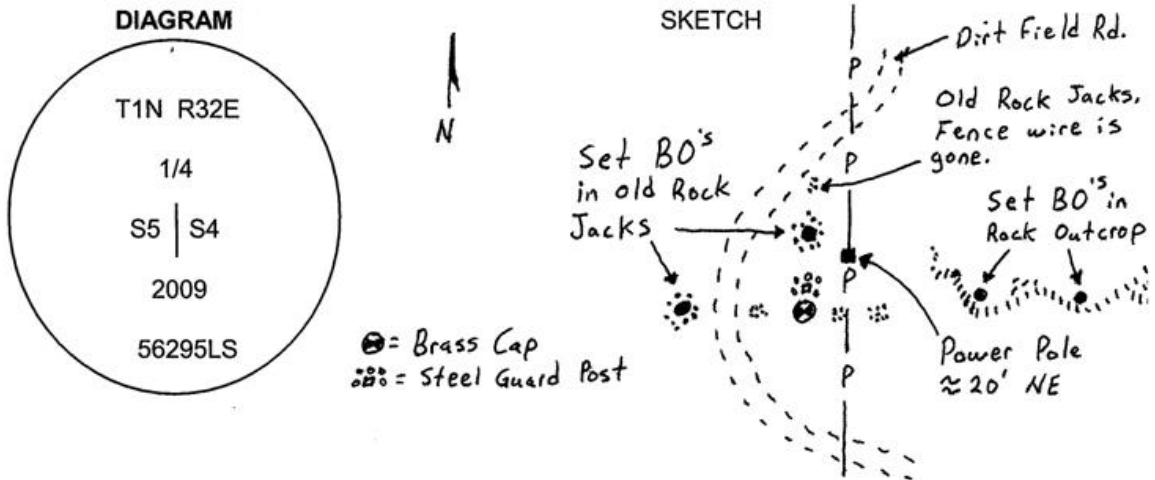
OREGON CORNER RESTORATION FORM

Section 5 Township 1N Range 32E
 County Umatilla Date: August 5, 2009

Corner Designation: 1N32C9 Condition Report Only
 Not found
 Quarter corner common to sections 4 and 5, x Remonumented
 T1N, R32E, W.M., Umatilla County, Oregon. Unrecorded
 Surveyed in
x Referenced out

Previous Renewals / Surveys, etc.
 Corner originally set by Daniel Chaplin under contract No. 107 Dated September 21, 1864.
 His record reads: Set stone, 20 x 8 x 8, for 1/4 sec. cor.

Monument and Accessories found: (condition and source)
 I found the original stone 20"x8"x8" lying on its side on the east side of a stone mound. The mound was approximately 3' in diameter, and the stone was plainly marked 1/4.



MONUMENT (S) AND ACCESSORIES SET (Procedures and Description)
 Set a 1 1/2" x 30" Galvanized Iron Pipe with a 2 1/2" brass cap 17" in the ground to bedrock. I buried the original stone along the north side of the cap and stamped the cap as shown in the diagram above. I set a 6 foot steel guard post with a monument sign attached on the north side of the cap.

For references, I set four 5/8" by 24" iron rebars with 1 1/4" orange plastic caps stamped WTS and 56295LS, as described below:
 an iron rebar bears N73°26'26"W, 53.22 feet in an old rock jack;
 an iron rebar bears N06°52'55"E, 68.18 feet in an old rock jack;
 an iron rebar bears N64°23'02"E, 64.92 feet in a small rock bluff;
 an iron rebar bears S76°29'47"E, 128.05 feet in a small rock bluff;

This monument and references were tied using a Trimble R7/R8 RTK GPS.

Location and comments
 NAD 83/1991 State Plane Coordinate
 Oregon North Zone
 N = 707,326.71 ft
 E = 8,630,090.81 ft

Compass Declination
 Firm / Agency
 Witness Tree Surveying
 Address
 P.O. Box G
 Pilot Rock, Or. 97868
 Party Chief
 Stephen K. Haddock

Surveyors Seal

RECEIVED BY:
 Umatilla County Surveyor
 Date: 6-10
 Rec'd By: KE
 No. 10-93-C

