

OREGON CORNER RESTORATION FORM

SECTION 16,21 TOWNSHIP 1 NORTH RANGE 29 EAST

N-11

COUNTY : UMATILLA DATE: JULY 2007

CORNER DESIGNATION

1/4 CORNER

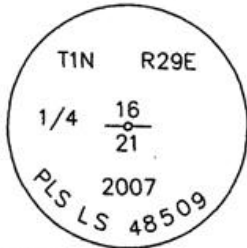
- CONDITION REPORT ONLY
- NOT FOUND
- RENEWED
- UNCOVERED
- SURVEYED IN
- REFERENCED

PREVIOUS RENEWALS / SURVEYS, ETC.

ORIGINALLY SURVEYED IN 1858 BY THOMPSON UNDER CONTRACT #79. HE SET A POST IN A MOUND OF EARTH.
 SURVEYED IN 1859 BY THOMPSON UNDER CONTRACT #83. HE SET A POST IN A MOUND OF EARTH.
 SURVEYED IN 1860 BY CARTEE UNDER CONTRACT #88. HE SET A POST IN A MOUND OF EARTH.

MONUMENTS AND ACCESSORIES FOUND: CONDITION AND SOURCE
 FOUND ROCK MOUND

MONUMENT DETAIL

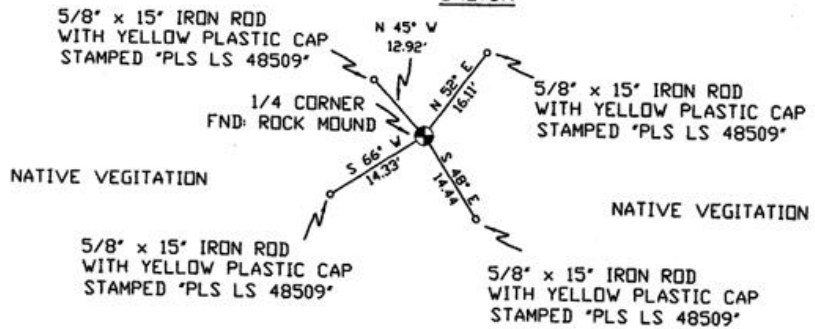


NAD 83/91
 OREGON STATE PLANE
 INTERNATIONAL FEET

692811.1413
 8536408.1071

N.T.S

SKETCH



MONUMENT SET (PROCEDURES AND DESCRIPTION)

SET 2 3/8" BRASS CAP AT LOCATION OF CENTER OF ROCK MOUND, WITH ROCK COLLAR.

NEW ACCESSORIES FROM WHICH

- A 5/8" x 15" IRON ROD WITH A PLASTIC CAP STAMPED "PLS LS 48509" LIES N 45° W, 12.92 FEET.
- A 5/8" x 15" IRON ROD WITH A PLASTIC CAP STAMPED "PLS LS 48509" LIES N 52° E, 16.11 FEET.
- A 5/8" x 15" IRON ROD WITH A PLASTIC CAP STAMPED "PLS LS 48509" LIES S 48° E, 14.44 FEET.
- A 5/8" x 15" IRON ROD WITH A PLASTIC CAP STAMPED "PLS LS 48509" LIES S 66° W, 14.33 FEET.

LOCATION AND COMMENTS

FROM INTERSECTION OF BUTTER CREEK WITH WEST BOUNDARY OF TOWNSHIP 1 NORTH, RANGE 29 EAST W.M. GO NORTH ± 1.2 MILES, THEN GO EAST ± 2.5 MILES TO CORNER

COMPASS DEC.
 17° EAST

FIRM/AGENCY
 PRIMM LAND SURVEYING
 1340 N.E. 4TH STREET
 P.O. BOX 1322
 HERMISTON, OREGON 97838

PARTY CHIEF
 BRIT L. PRIMM

NOTES

WITNESS
 CODY L. HANSEN

SURVEYOR'S SEAL

REGISTERED
 PROFESSIONAL
 LAND SURVEYOR

BLP
 OREGON
 JULY 13, 1999
 BRIT L. PRIMM
 48509

EXPIRATION DATE: 31 JAN 08

07-260-C