

# OREGON CORNER RESTORATION FORM

SECTION 10,15 TOWNSHIP 1 NORTH RANGE 29 EAST  
 COUNTY : UMATILLA DATE: JUNE 2007

J-15

CORNER DESIGNATION

1/4 CORNER

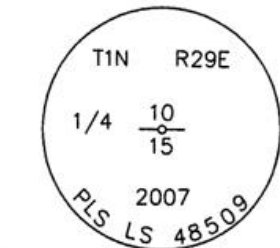
- CONDITION REPORT ONLY
- NOT FOUND
- RENEWED
- UNCOVERED
- SURVEYED IN
- REFERENCED

PREVIOUS RENEWALS / SURVEYS, ETC.

ORIGINALLY SURVEYED IN 1858 BY THOMPSON UNDER CONTRACT #79. HE SET A POST IN A MOUND OF EARTH.  
 SURVEYED IN 1859 BY THOMPSON UNDER CONTRACT #83. HE SET A POST IN A MOUND OF EARTH.  
 SURVEYED IN 1860 BY CARTEE UNDER CONTRACT #88. HE SET A POST IN A MOUND OF EARTH.

MONUMENTS AND ACCESSORIES FOUND: CONDITION AND SOURCE  
 FOUND DECAYED WOOD POST

MONUMENT DETAIL

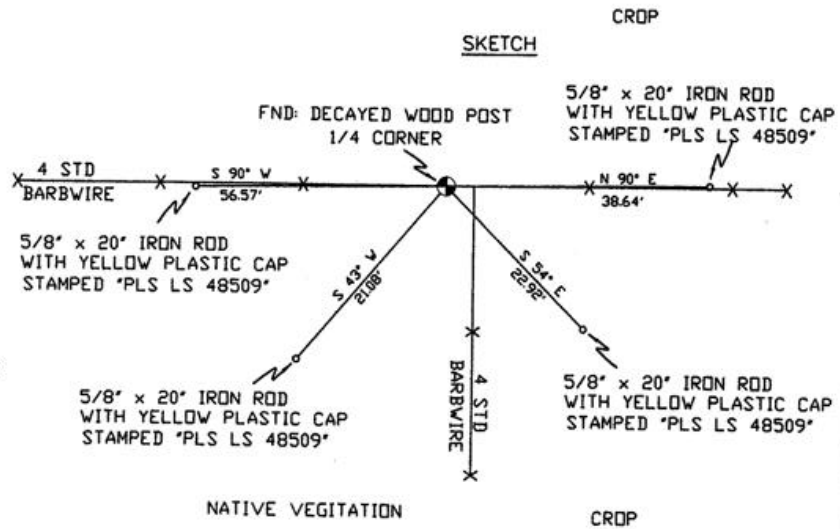


NAD 83/91  
 OREGON STATE PLANE  
 INTERNATIONAL FEET

698137.0384  
 8541634.0099



SKETCH



MONUMENT SET ( PROCEDURES AND DESCRIPTION )

SET 2 3/8" BRASS CAP AT LOCATION OF DECAYED WOOD POST, 2' DIA. ROCK COLLAR ± 6" HIGH LAY DECAYED WOOD POST ALONG SIDE

NEW ACCESSORIES FROM WHICH

- A 5/8" x 20" IRON ROD WITH A PLASTIC CAP STAMPED "PLS LS 48509" LIES N 90° E, 38.64 FEET.
- A 5/8" x 20" IRON ROD WITH A PLASTIC CAP STAMPED "PLS LS 48509" LIES S 90° W, 56.57 FEET.
- A 5/8" x 20" IRON ROD WITH A PLASTIC CAP STAMPED "PLS LS 48509" LIES S 43° W, 21.08 FEET.
- A 5/8" x 20" IRON ROD WITH A PLASTIC CAP STAMPED "PLS LS 48509" LIES S 54° E, 22.92 FEET.

LOCATION AND COMMENTS

FROM INTERSECTION OF ALKALI CANYON WITH EAST BOUNDARY OF TOWNSHIP 1 NORTH, RANGE 29 EAST W.M. GO SOUTH ± 1.4 MILES THEN GO WEST ± 2.5 MILES TO CORNER

COMPASS DEC.

17° EAST

FIRM/AGENCY

PRIMM LAND SURVEYING  
 1340 N.E. 4TH STREET  
 P.O. BOX 1322  
 HERMISTON, OREGON 97838

PARTY CHIEF

KEITH P. PRIMM

NOTES

WITNESS

CODY L. HANSEN

SURVEYOR'S SEAL

REGISTERED  
 PROFESSIONAL  
 LAND SURVEYOR

*Brit L. Primm*

OREGON  
 JULY 13, 1999  
 BRIT L. PRIMM  
 48509

EXPIRATION DATE: 31 JAN 08

07-260-C