

OREGON CORNER RESTORATION FORM

SECTION 11,12 TOWNSHIP 1 NORTH RANGE 29 EAST
 COUNTY : UMATILLA DATE: JUNE 2007

G-21

CORNER DESIGNATION

1/4 CORNER

- CONDITION REPORT ONLY
- NOT FOUND
- RENEWED
- X UNCOVERED
- SURVEYED IN
- X REFERENCED

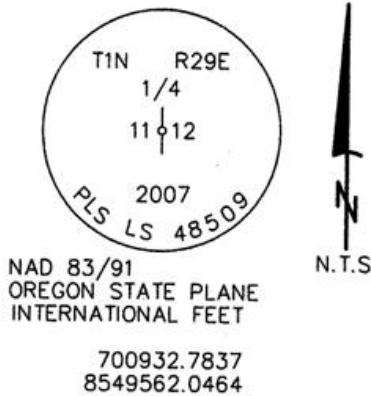
PREVIOUS RENEWALS / SURVEYS, ETC.

ORIGINALLY SURVEYED IN 1858 BY THOMPSON UNDER CONTRACT #79. HE SET A POST IN A MOUND OF EARTH.
 SURVEYED IN 1859 BY THOMPSON UNDER CONTRACT #83. HE SET A POST IN A MOUND OF EARTH.
 SURVEYED IN 1860 BY CARTEE UNDER CONTRACT #88. HE SET A POST IN A MOUND OF EARTH.

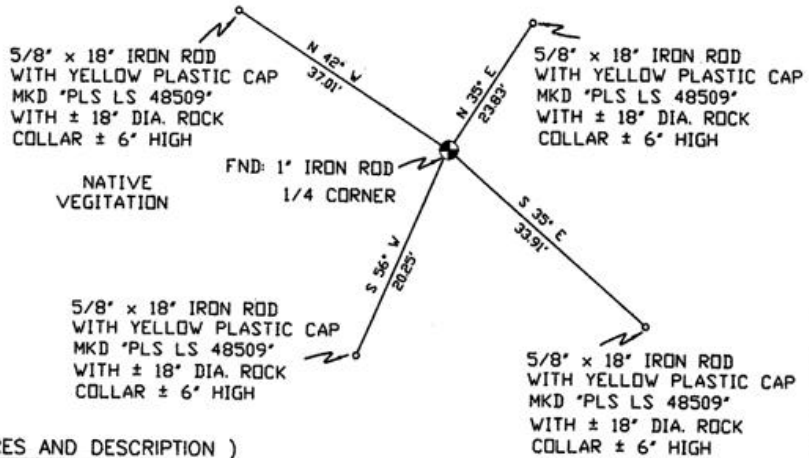
MONUMENTS AND ACCESSORIES FOUND: CONDITION AND SOURCE

FOUND 1" IRON ROD ORIGIN UNKNOWN

MONUMENT DETAIL



SKETCH



MONUMENT SET (PROCEDURES AND DESCRIPTION)

SET 2 3/8" BRASS CAP AT LOCATION OF 1" IRON ROD WITH ± 3' DIA. ROCK COLLAR ± 1' HIGH LAY 1" IRON ROD ALONG SIDE.

NEW ACCESSORIES FROM WHICH

- A 5/8" x 18" IRON ROD WITH A PLASTIC CAP STAMPED "PLS LS 48509" LIES N 42° W, 37.01 FEET.
- A 5/8" x 18" IRON ROD WITH A PLASTIC CAP STAMPED "PLS LS 48509" LIES N 35° E, 23.83 FEET.
- A 5/8" x 18" IRON ROD WITH A PLASTIC CAP STAMPED "PLS LS 48509" LIES S 35° E, 33.91 FEET.
- A 5/8" x 18" IRON ROD WITH A PLASTIC CAP STAMPED "PLS LS 48509" LIES S 56° W, 20.25 FEET.

LOCATION AND COMMENTS

FROM INTERSECTION OF ALKALI CANYON WITH NORTH BOUNDARY OF TOWNSHIP 1 NORTH, RANGE 29 EAST W.M. GO WEST ± 0.4 MILE THEN GO SOUTH ± 1.5 MILES TO CORNER

COMPASS DEC.

17° EAST

FIRM/AGENCY

PRIMM LAND SURVEYING
 1340 N.E. 4TH STREET
 P.O. BOX 1322
 HERMISTON, OREGON 97838

PARTY CHIEF

KEITH P. PRIMM

NOTES

WITNESS

CODY L. HANSEN

SURVEYOR'S SEAL

REGISTERED
 PROFESSIONAL
 LAND SURVEYOR

Brit L. Primm

OREGON
 JULY 13, 1999
 BRIT L. PRIMM
 48509

EXPIRATION DATE: 31 JAN 08

07-260-C